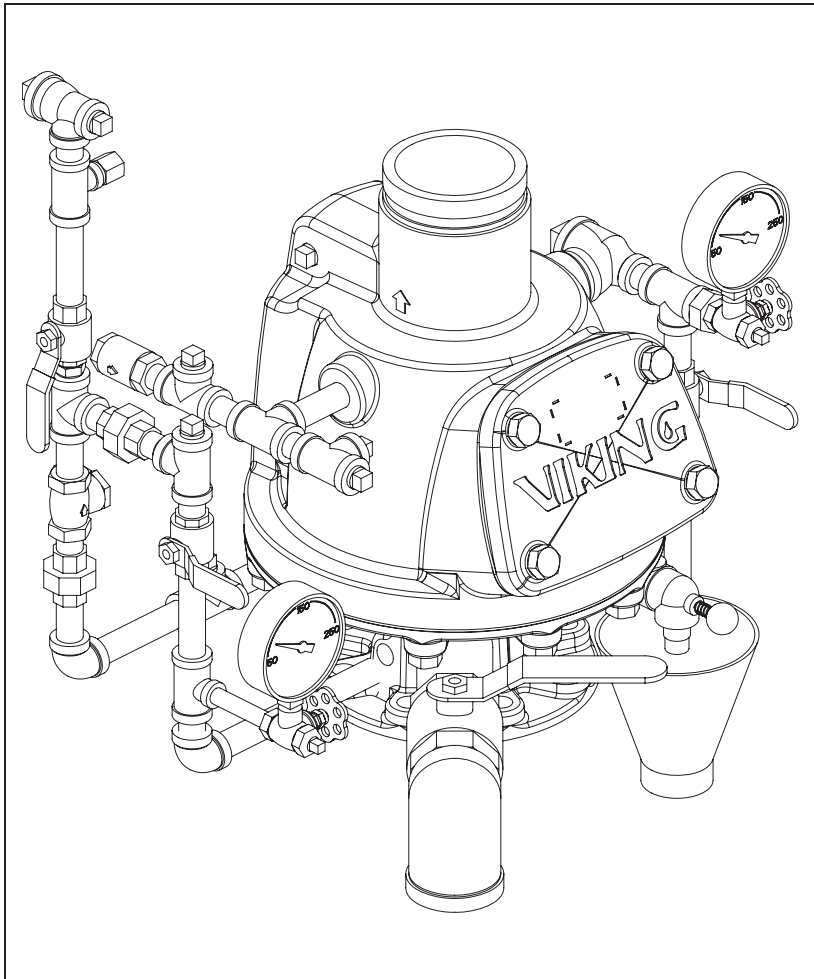


# VIKING®

## TECHNICAL DATA

**MODEL F-1  
DRY VALVE  
EURO CONVENTIONAL TRIM**



**This Trim Chart is for use with the following Viking Trim Sets**

Valve Size	Trim Part Number	Conventional trim sets for the Model F Dry Valve consist of galvanized nipples and fittings.
DN80 (3")	10158-L	
DN100 (4")	08395-L	
DN150 (6")	13583-L	

### NOTES: For use with Trim Chart on page 121b\_Euro

#### General Notes:

- Valve must be trimmed as shown. Any deviation from trim size or arrangement may affect the proper operation of the valve.
- All pipe, 3/4" (20mm) and smaller, shall be galvanized steel except when other materials are specified in the Technical Data for the system used.
- When the Model F-1 Dry Valve is used on pre-mixed Foam Systems, trim piping must be of black steel pipe with cast iron or malleable iron fittings unless other materials are specified in the Technical Data for the system used.
- Items denoted with † are removed when the optional Model E Accelerator Trim is installed.

**Note 1:** Connection for electric Alarm Pressure Switch to activate electric alarm panels. Note: After the Dry Valve trips, supply to this location cannot be shut off until the water supply to the Dry Valve is shut off. Foam Systems: When a PORV is used to activate a Halar® Coated Deluge Valve, connect the 1/2" (15mm) NPT water supply for PORV at this location. (See Viking Foam Systems Engineering and Design Data book.)

**Note 2:** Water flow alarm connections: 3/4" (20mm) NPT for Water Motor Alarm (strainer required) and 1/2" (15mm) NPT for electric Alarm Pressure Switch to activate electric alarm bells.

**Note 3:** Recommended location for Air Supervisory Switch.

**Note 4:** 1" (25mm) NPT connection for sprinkler.

**Note 5:** Locate listed Air Maintenance Device (order separately) as close to this connection as possible. Refer to installation standards. Recommended location for connection of optional Air Maintenance Compressor.

**Note 6:** Tube must discharge TO OPEN DRAIN. Do not crimp or plug tube. Secure tube to 1/2" X 9" nipple below priming water level test valve with cable tie included in trim kit.

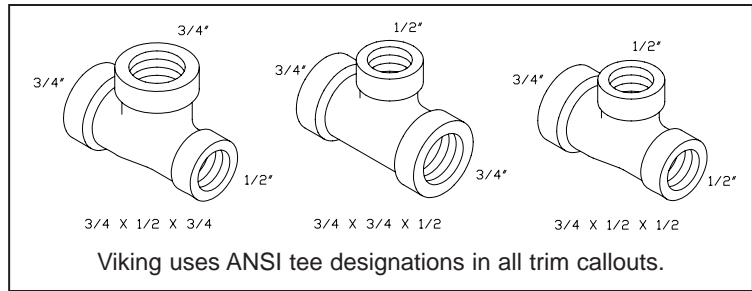
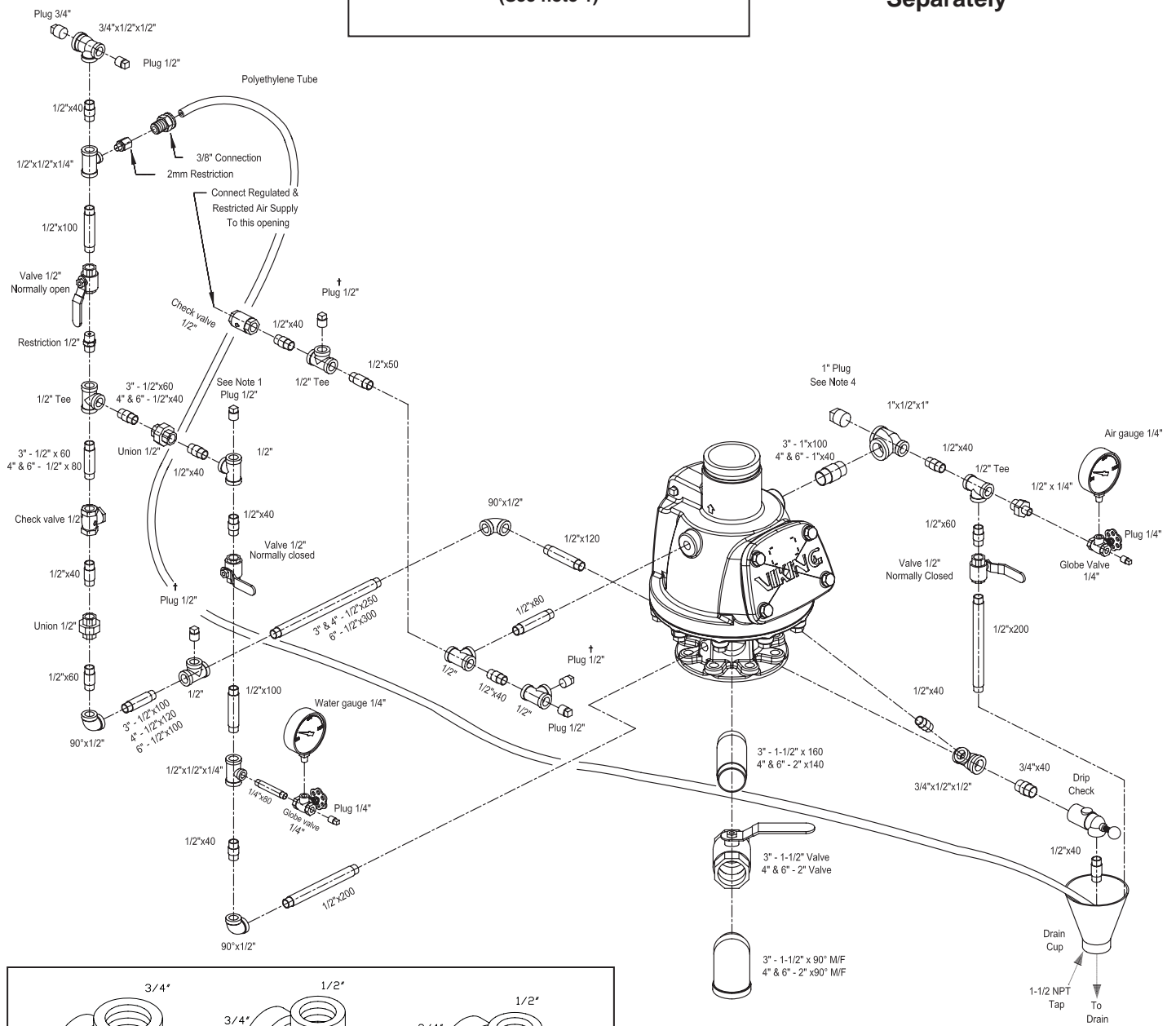
VIKING<sup>®</sup>

TECHNICAL DATA

**MODEL F-1**  
**DRY VALVE**  
**EURO CONVENTIONAL TRIM**

**Conventional Trim provides a connection for installation of a non interruptable pressure switch to activate an electric alarm panel.**  
**(See note 1)**

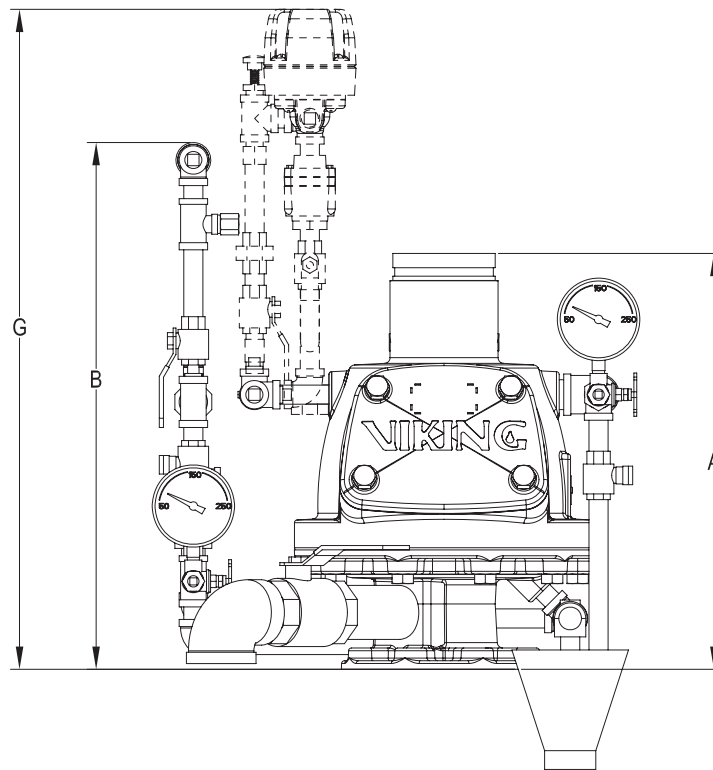
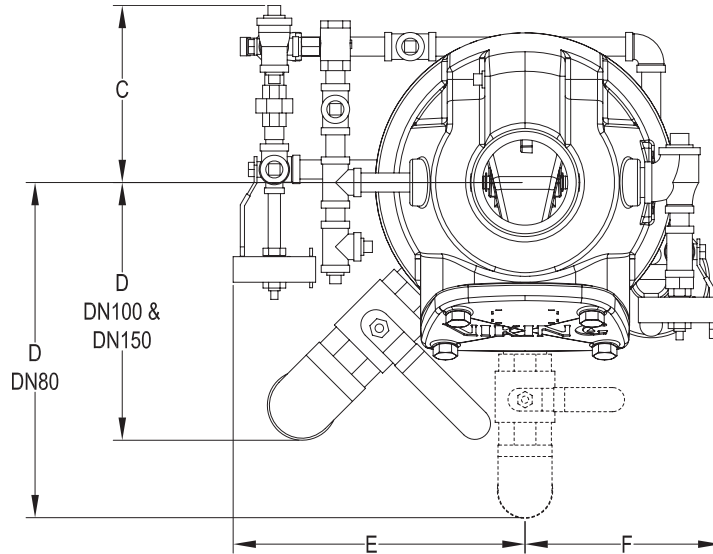
**Order Valve Separately**



VIKING<sup>®</sup>

# TECHNICAL DATA

**MODEL F-1**  
**DRY VALVE**  
**EURO CONVENTIONAL TRIM**



	A	B	C	D	E	F	G
<b>DN80</b> <b>(3")</b>	464 (18-1/4")	609 (24")	198 (7-13/16")	374 (14-3/4")	319 (12-9/16")	219 (8-5/8")	965 (38")
<b>DN100</b> <b>(4")</b>	464 (18-1/4")	588 (23-1/8")	198 (7-13/16")	288 (11-5/16")	326 (12-13/16)	219 (8-5/8")	946 (37-15/16")
<b>DN150</b> <b>(6")</b>	510 (20-1/16")	605 (23-13/16")	198 (7-13/16")	295 (11-5/8")	326 (12-13/16)	252 (9-15/16")	990 (38-15/16")

**THIS PAGE  
INTENTIONALLY  
LEFT BLANK**