

	<h1 style="margin: 0;">TECHNICAL DATA</h1>	<p><b>3" - 8" (DN80 - DN200)</b>  <b>HORIZONTAL SOLENOID</b>  <b>OPERATED FLOW CONTROL</b>  <b>VALVE</b> Maximum 250 PSI WWP</p>
---	--	--

**The Viking Corporation, 210 N Industrial Park Drive, Hastings MI 49058**

**Telephone: 269-945-9501 Technical Services: 877-384-5464 Fax: 269-818-1680 Email: techsvcs@vikingcorp.com**

**1. DESCRIPTION**

The Viking Horizontal Pilot Deluge System is a simple pilot control system that utilizes a straight through Model J-1 Flow Control Valve, operated with a solenoid valve. The flow control valve is a quick opening, differential diaphragm flood valve with a spring-loaded floating clapper. It is held closed by water pressure trapped in the priming chamber; keeping the outlet chamber and downstream piping dry. The solenoid valve is a normally closed control valve that energizes open upon receiving power applied to the solenoid coil. When the pilot control system operates, pressure is released from the priming chamber of the flow control valve. This opens the clapper to allow water to flow into the piping. The solenoid operated flow control valve can be remotely operated for on-off applications.

**Features:**

1. Simple design with easy installation and maintenance
2. Designed for remote resetting and activation
3. Flow control valve-field replaceable diaphragm and seat rubbers

**2. LISTINGS AND APPROVALS:**

 **UL** **us** **cULus** Listed: Guide No. VLFT

**3. TECHNICAL DATA**

**Flow Control Valve Specifications:**

Maximum Working Water Pressure: 250 PSI (17.4 bar)  
 Factory tested: to 500 psi (34.5 bar)  
 Valve differential: 2:1 (priming chamber to inlet chamber)  
 Color of valve: Red  
 Friction loss and C<sub>v</sub> Factor: Refer to Table 1.

**Flow Control Valve Material Standards:**

Main Valve Body and Cover: Ductile Iron, Grade 65-45-12, Brass UNS-C84400 or UNS-C83600

**Main Trim Material Standards:**

Nipples and fittings: Galvanized steel  
 Drain Tube: 7" (177.8 mm) copper tube

**Flexible Hose Specifications and Material Standards:**

3/8" ID Stainless Steel braided corrugated tube  
 Lengths: 18" (457 mm) for the 3" and 4" (DN80 and DN100) valves, 24" (610 mm) for the 6" (DN150) valve, and 31" (787 mm) for the 8" (DN200) valve +/- 1/2" (12.7 mm).

**NOTE: 1-1/2" (38.1 mm) minimum bend radius**

**Solenoid Valve Specifications:**

NEMA 1,2,3,3S,4,4X general purpose, watertight  
 24 VDC, Wattage: 9.0 DC, DC Current: 338mA  
 Operating Pressure: Max. 250 psi (17.2 bar), Min. 5 psi (0.35 bar)  
 Coil: Class H, Continuous Duty  
 Maximum ambient temperature: 130 °F (54 °C)

C<sub>v</sub> Factor: 4.0

**Solenoid Valve Material Standards:**

Body: Brass  
 Seals and Discs: Buna N  
 Core Tube: 305 Stainless Steel  
 Core and Plugnut: 430F Stainless Steel  
 Springs: 302 Stainless Steel

**Ordering Information:**

Part Numbers: Refer to Table 1  
 Replacement Solenoid Valve Part Number: 11601

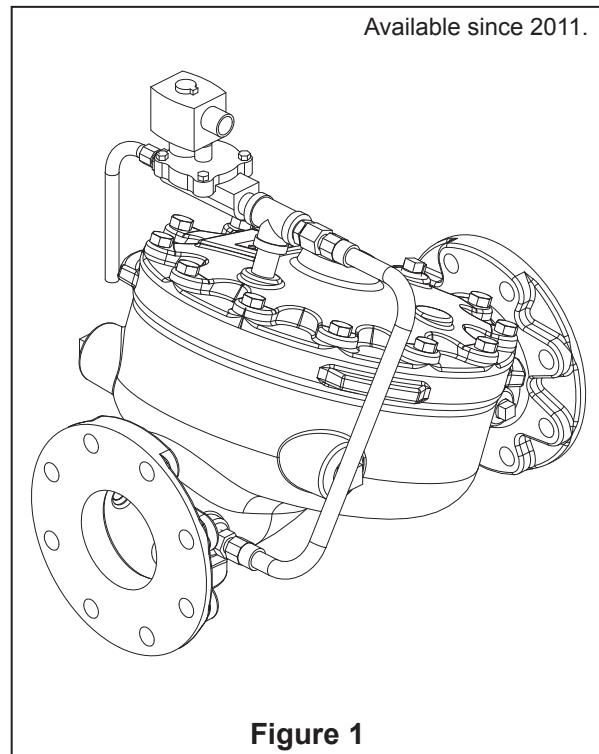


Table 1: Part Numbers					
Valve Size	Friction Loss*	C <sub>v</sub> Factor*	Part Nos. (Galvanized**)		
			F/F (ANSI)	G/G	Pipe O.D.
3" (DN80)	22 ft. (6.7 m)	198	17363	17359	89 mm
4" (DN100)	21 ft. (6.4 m)	416	17364	17360	114 mm
6" (DN150)	39 ft. (11.9 m)	884	17365	17361	168 mm
8" (DN200)	57 ft. (17.4 m)	1500	17366	17362	219 mm

\* Values are for the flow control valve only. Friction loss is expressed in equivalent length of Schedule 40 pipe based on Hazen & Williams C = 120.  
 \*\*Standard Trim consists of galvanized nipples and fittings.

$Q = C_v \sqrt{\frac{\Delta P}{S}}$	<p>Q = Flow</p> <p>C<sub>v</sub> = Flow Factor (GPM/1 PSI ΔP)</p> <p>ΔP = Pressure Loss through Valve</p> <p>S = Specific Gravity of Fluid</p>
-------------------------------------	--

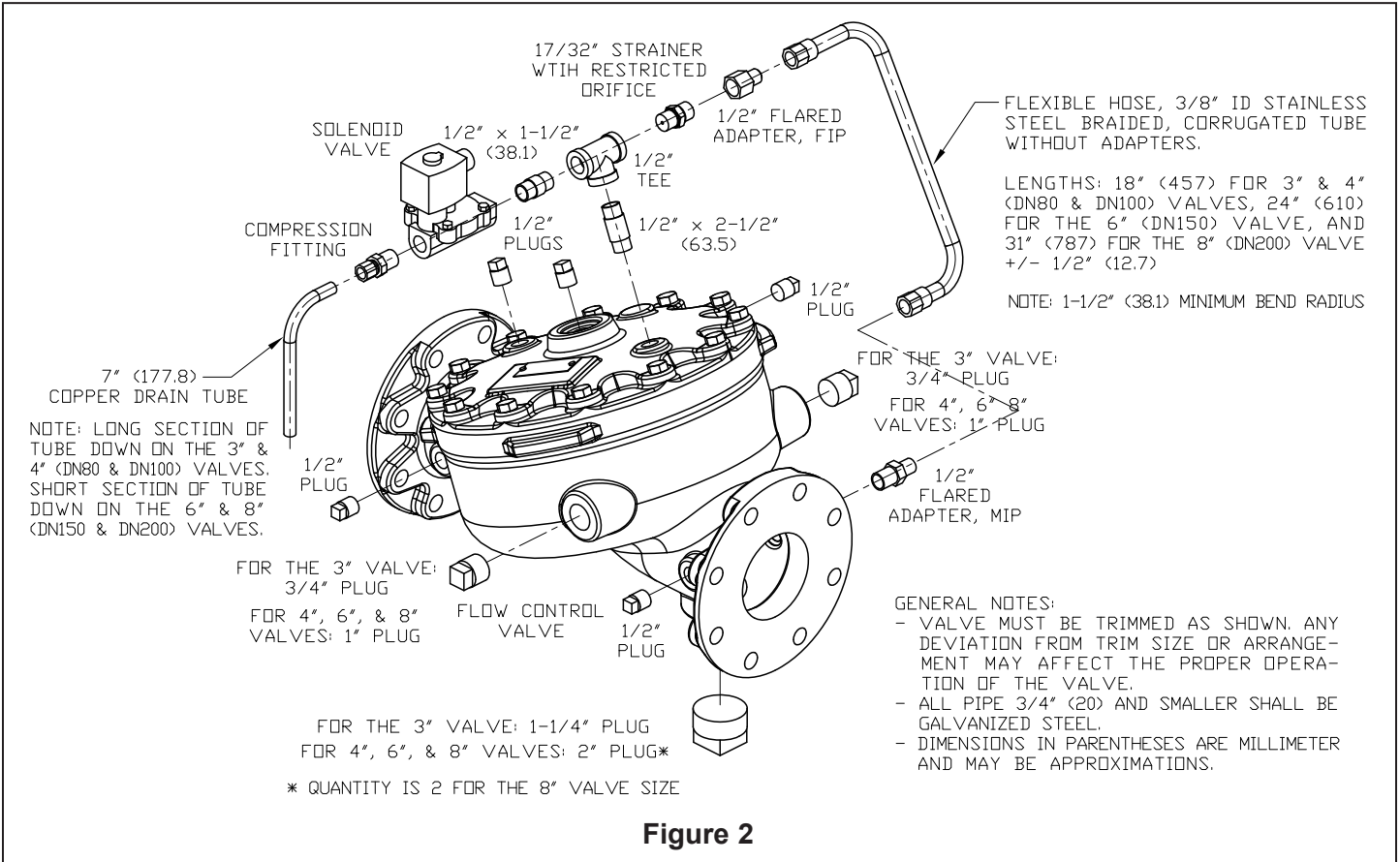


**TECHNICAL DATA**

**3" - 8" (DN80 - DN200)  
HORIZONTAL SOLENOID  
OPERATED FLOW CONTROL  
VALVE** Maximum 250 PSI WWP

The Viking Corporation, 210 N Industrial Park Drive, Hastings MI 49058

Telephone: 269-945-9501 Technical Services: 877-384-5464 Fax: 269-818-1680 Email: techsvcs@vikingcorp.com



**Figure 2**