



TECHNICAL DATA

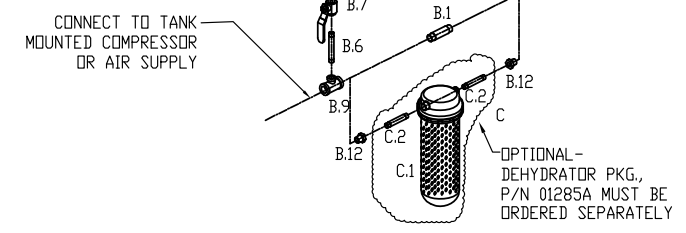
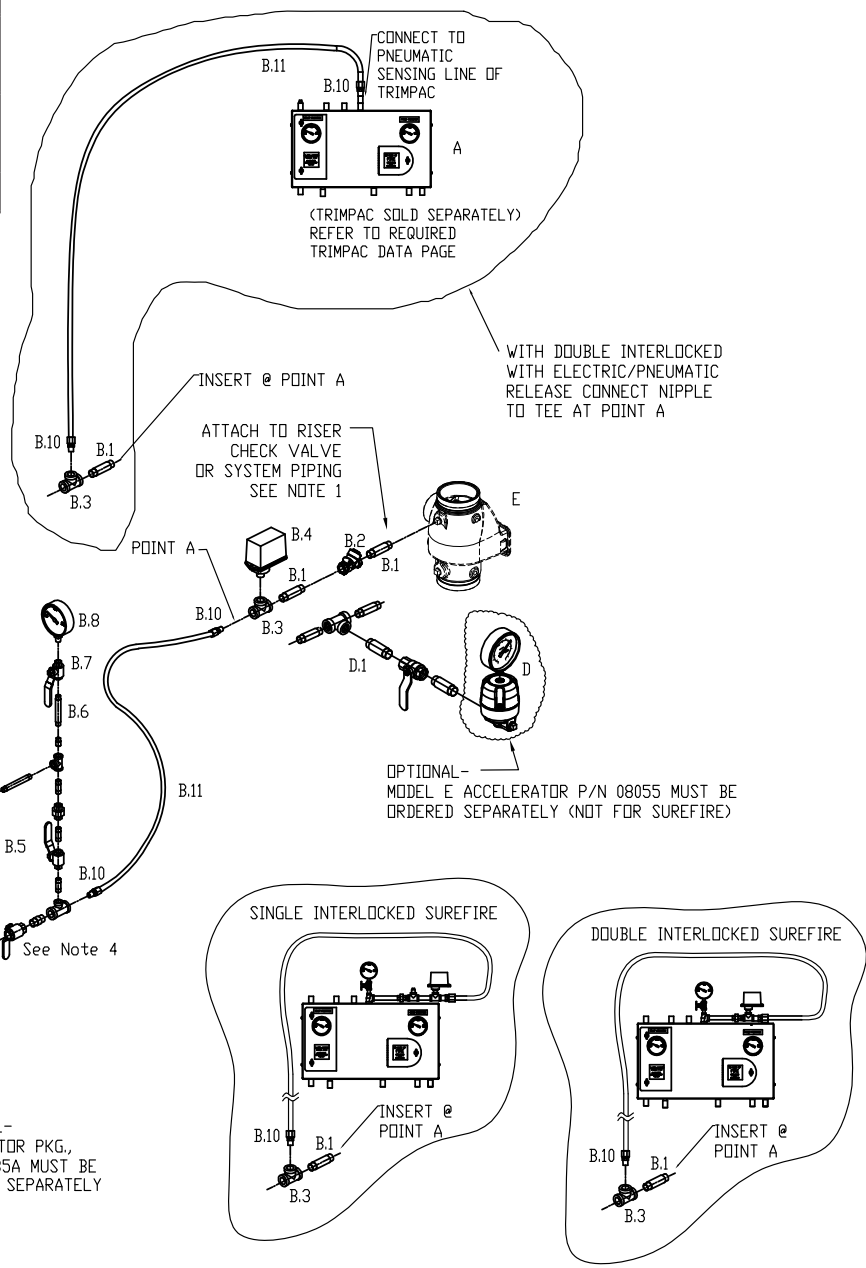
TRIMPAC® AIR LINE TRIM

The Viking Corporation, 210 N Industrial Park Drive, Hastings MI 49058

Telephone: 269-945-9501 Technical Services 877-384-5464 Fax: 269-945-4495 Email: techsvcs@vikingcorp.com

For use on Preaction Systems when using a TANK Mounted Compressor.	
Part Number	13770
For use with:	Double Interlock Electric/ Pneumatic
	Double Interlock Electric/ Pneu-Letric
	Single Interlock Electric

- A. TrimPac (Ordered separately)
- B. Air Line Trim for Tank Mounted Air Compressor includes:
 - B.1 Nipple, 1/2" x 3, Galv.
 - B.2 Check Valve, 1/2"
 - B.3 Tee, 1/2" Galv
 - B.4 Pressure Switch
 - B.5 Air Maintenance Loop
 - B.6 Nipple, 1/4" x 3-1/2, Galv
 - B.7 1/4" Ball Valve (Open)
 - B.8 Gauge, Air
 - B.9 Tee, 1/2" x 1/2" x 1/4", Galv.
 - B.10 Fitting
 - B.11 Copper Tubing, Approx. 10 ft. each
 - B.12 Reducer, 1/2-1/4
- C. Dehydrator Package (Optional) (Ordered separately - includes:
 - C.1 Dehydrator
 - C.2 Nipples, 1/4" x 2", Galv. (included)
 - C.3 Bracket Assembly (not shown)
- D. Accelerator, Model E (Optional - Order separately)
 - D.1 Nipples, Ball Valve & Tee (Ordered separately by field)
- E. Riser Check Valve (Ordered separately)



NOTE:

1. MUST BE CONNECTED TO CHECK VALVE OR SYSTEM RISER AS SHOWN TO ALLOW FOR DRAINAGE AFTER SYSTEM OPERATION.
2. MINIMUM BEND RADIUS FOR COPPER TUBE IS 1 3/4"R. USE PROPER BENDING TOOLS. DO NOT KINK OR BEND
3. SEE PROPER TRIMPAC DATA PAGE FOR CORRECT ATTACHMENT OF AIR SYSTEM.
4. AIR MAINTENANCE LOOP MUST BE SECURED TO WALL TO PREVENT STRESSING THE COPPER TUBING

FIGURE 1
FOR USE ON 2-1/2" - 8" PREACTION SYSTEMS WHEN USING A TANK MOUNTED COMPRESSOR



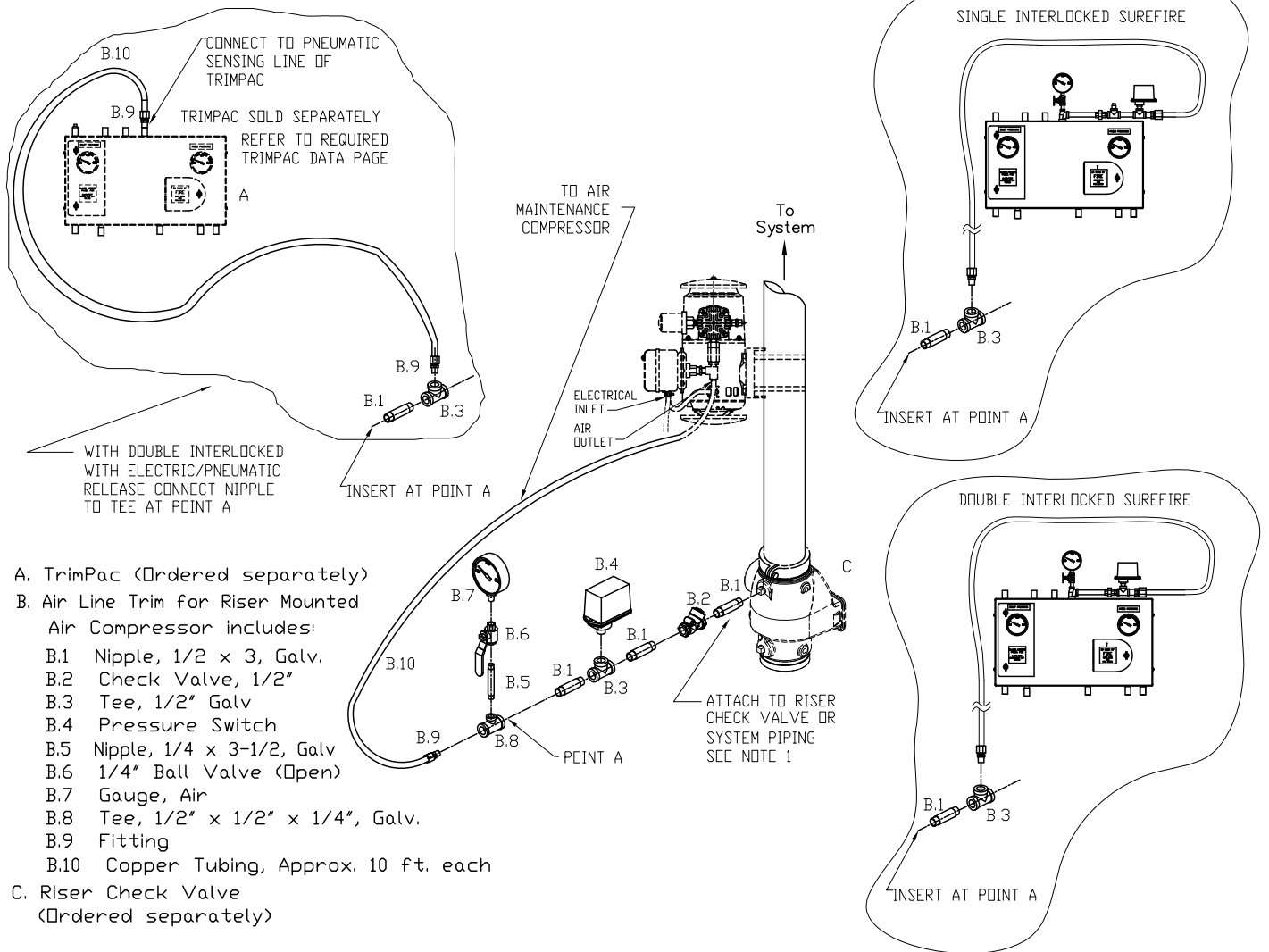
TECHNICAL DATA

**TRIMPAC®
AIR LINE TRIM**

The Viking Corporation, 210 N Industrial Park Drive, Hastings MI 49058

Telephone: 269-945-9501 Technical Services 877-384-5464 Fax: 269-818-1680 Email: techsvcs@vikingcorp.com

For use on Praction Systems when using a RISER Mounted Compressor.	
Part Number	13771
For use with:	Double Interlock Electric/ Pneumatic
	Double Interlock Electric/ Pneu-Lectric
	Single Interlock Electric



NOTE:

1. MUST BE CONNECTED TO CHECK VALVE OR SYSTEM RISER AS SHOWN TO ALLOW FOR DRAINAGE AFTER SYSTEM OPERATION.
2. MINIMUM BEND RADIUS FOR COPPER TUBE IS 1 3/4"R. USE PROPER BENDING TOOLS. DO NOT KINK OR BEND
3. SEE PROPER TRIMPAC DATA PAGE FOR CORRECT ATTACHMENT OF AIR SYSTEM.

**FIGURE 2
FOR USE ON 2-1/2" - 8" PRACTION SYSTEMS WHEN USING A RISER MOUNTED COMPRESSOR**



TECHNICAL DATA

**TRIMPAC®
AIR LINE TRIM**

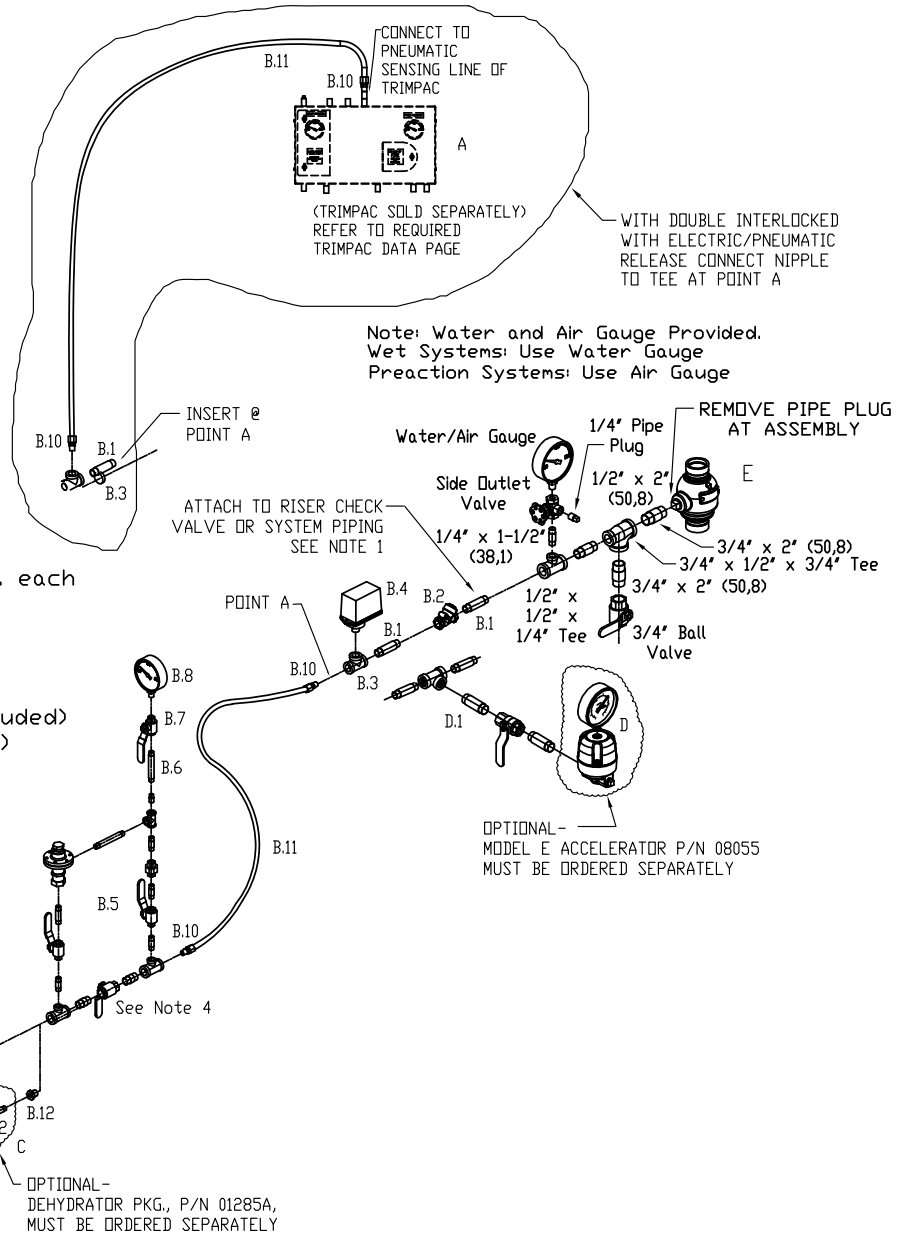
The Viking Corporation, 210 N Industrial Park Drive, Hastings MI 49058

Telephone: 269-945-9501 Technical Services 877-384-5464 Fax: 269-945-4495 Email: techsvcs@vikingcorp.com

**For use on Preaction Systems
when using a TANK Mounted
Compressor.**

Part Number	13770
For use with:	Double Interlock Electric/Pneumatic
	Double Interlock Electric/Pneu-Lectric
	Single Interlock Electric

- A. TrimPac (Ordered separately)
- B. Air Line Trim for Tank Mounted Air Compressor includes:
 - B.1 Nipple, 1/2" x 3", Galv.
 - B.2 Check Valve, 1/2"
 - B.3 Tee, 1/2" Galv
 - B.4 Pressure Switch
 - B.5 Air Maintenance Loop
 - B.6 Nipple, 1/4" x 3-1/2", Galv
 - B.7 1/4" Ball Valve (Open)
 - B.8 Gauge, Air
 - B.9 Tee, 1/2" x 1/2" x 1/4", Galv.
 - B.10 Fitting
 - B.11 Copper Tubing, Approx. 10 ft. each
 - B.12 Reducer, 1/2-1/4
- C. Dehydrator Package (Optional) (Ordered separately - includes:):
 - C.1 Dehydrator
 - C.2 Nipples, 1/4" x 2", Galv. (included)
 - C.3 Bracket Assembly (not shown)
- D. Accelerator, Model E (Optional - Order separately)
 - D.1 Nipples, Ball Valve & Tee (Ordered separately by field)
- E. Riser Check Valve (Ordered separately)



NOTE:

1. MUST BE CONNECTED TO CHECK VALVE OR SYSTEM RISER AS SHOWN TO ALLOW FOR DRAINAGE AFTER SYSTEM OPERATION.
2. MINIMUM BEND RADIUS FOR COPPER TUBE IS 1-3/4"R. USE PROPER BENDING TOOLS. DO NOT KINK OR BEND.
3. SEE PROPER TRIMPAC DATA PAGE FOR CORRECT ATTACHMENT OF AIR SYSTEM.
4. AIR MAINTENANCE LOOP MUST BE SECURED TO WALL TO PREVENT STRESSING THE COPPER TUBING.

**FIGURE 3
FOR USE ON 1-1/2" - 2" PREACTION SYSTEMS WHEN USING A TANK MOUNTED COMPRESSOR**



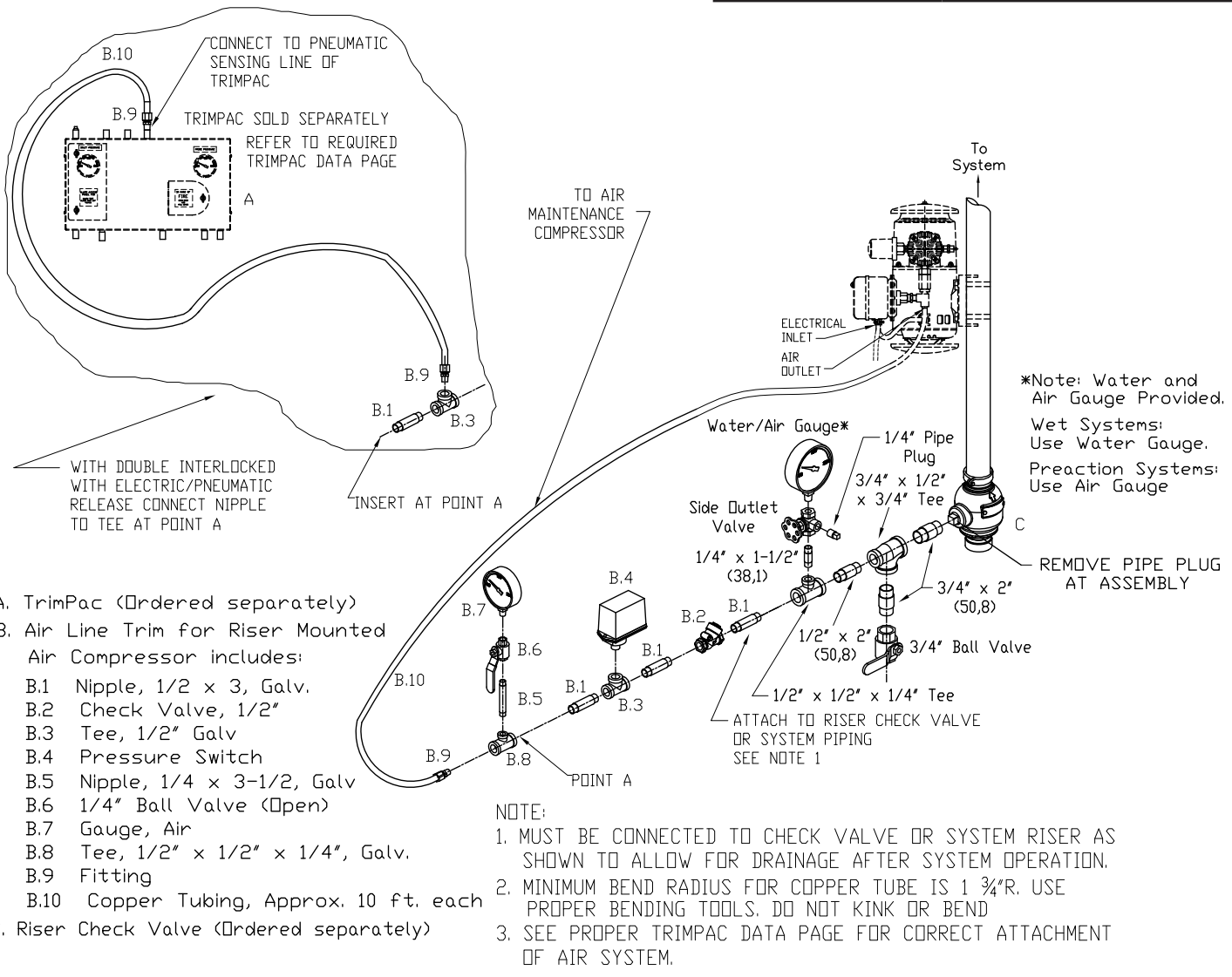
TECHNICAL DATA

**TRIMPAC®
AIR LINE TRIM**

The Viking Corporation, 210 N Industrial Park Drive, Hastings MI 49058

Telephone: 269-945-9501 Technical Services 877-384-5464 Fax: 269-818-1680 Email: techsvcs@vikingcorp.com

For use on Preaction Systems when using a RISER Mounted Compressor.	
Part Number	13771
For use with:	Double Interlock Electric/ Pneumatic
	Double Interlock Electric/ Pneu-Lectric
	Single Interlock Electric



**FIGURE 4
FOR USE ON 1-1/2" - 2" PREACTION SYSTEMS WHEN USING A RISER MOUNTED COMPRESSOR**