



TECHNICAL DATA

FIXED EDUCTORS

The Viking Corporation, 210 N Industrial Park Drive, Hastings MI 49058

Telephone: 269-945-9501 Technical Services: 877-384-5464 Fax: 269-818-1680 Email: techsvcs@vikingcorp.com

Visit the Viking website for the latest edition of this technical data page.

1. DESCRIPTION

Fixed eductors present a simple, cost-effective method to proportion foam concentrate and water at the proper percentage. Chemguard offers a full range of Fixed Eductors in corrosion resistant brass. Fixed Eductors are constant flow devices that produce accurate proportioning of foam concentrate at a specified flow and pressure. It is therefore critical to match the line proportioner with all downstream devices, including all friction loss associated with delivering that flow to the particular discharge device(s) at the design pressure.

Fixed Eductors are typically used in fixed systems where simple and cost effective foam proportioning is required. Other than flowing water, no external power supplies are required to operate Fixed Eductors.

Features

- All brass construction
- Custom flow and pressure options available
- Optional threaded or flanged connections



2. LISTINGS AND APPROVALS

See Table 1.

3. TECHNICAL DATA

Specifications:

See Table 1.

Material Standards:

Brass

Ordering Information:

See Table 1.

4. INSTALLATION

For proper operation and to achieve a respectable nozzle operating pressure, Fixed Eductors require inlet pressures in the range of 80 – 200 psi (5.4 – 14 bar), since friction loss through the device is in the order of 35%. Care should also be taken to ensure that the line proportioner is mounted at a maximum of 8 ft. (2.4 m) above the minimum expected foam liquid surface.

5. INSPECTIONS, TESTS AND MAINTENANCE

NOTICE

The owner is responsible for maintaining the fire protection system and devices in proper operating condition. For minimum maintenance and inspection requirements, refer to recognized standards such as those produced by NFPA, LPC, and VdS which describe care and maintenance of sprinkler systems. In addition, the "Authority Having Jurisdiction" may have additional maintenance, testing and inspection requirements which must be followed.

⚠ WARNING

Any system maintenance or testing which involves placing a control valve or detection system out of service may eliminate the Fire Protection of that system. Prior to proceeding, notify all Authorities Having Jurisdiction. Consideration should be given to employment of a Fire Patrol in the affected area.

6. AVAILABILITY

Viking Foam Products are available through a network of domestic and international distributors. See the Viking web site for closest distributor or contact The Viking Corporation.

7. GUARANTEE

For details of warranty, refer to Viking's current list price schedule or contact Viking directly.



TECHNICAL DATA

FIXED EDUCTORS

The Viking Corporation, 210 N Industrial Park Drive, Hastings MI 49058
 Telephone: 269-945-9501 Technical Services: 877-384-5464 Fax: 269-818-1680 Email: techsvcs@vikingcorp.com
 Visit the Viking website for the latest edition of this technical data page.

Table 1: Specifications					
Part No.	K Factor Water	K Factor 1%	K Factor 3%	K Factor 6%	Listings and Approvals
F20723	4.3	4.4	4.5	4.6	*
F20724	6.7	6.8	7.0	7.1	*
F20625	8.5	--	8.8	9.0	None
F20626	15.3	--	15.9	16.2	None
F20627	16.8	--	17.4	17.8	None
F20628	20.2	--	21.0	21.5	None
F20629	26.3	--	27.2	27.9	None
F20630	32.1	--	33.2	34.1	None
F20631	35.5	--	36.8	37.7	None
F20632	41.8	--	43.3	44.4	None
F20633	44.2	--	45.8	46.9	None
F20634	50.1	--	51.9	53.2	None
F20635	56.3	--	58.4	59.8	None
* UL Listed at 1% and 3% foam concentrate.					



TECHNICAL DATA

FIXED EDUCATORS

The Viking Corporation, 210 N Industrial Park Drive, Hastings MI 49058

Telephone: 269-945-9501 Technical Services: 877-384-5464 Fax: 269-818-1680 Email: techsvcs@vikingcorp.com

Visit the Viking website for the latest edition of this technical data page.

Part No.	Table 3: Dimensions							
	A NPT	B NPT	C NPT	D in (mm)	E in (mm)	F in (mm)	G in (mm)	H in (mm)
F20625	2 1/2 - 8	1/2 - 14	2 1/2 - 8	3.56 (90.4)	2.38 (108.0)	14.25 (362.0)	2.88 (73.2)	2.00 (50.8)
F20626	2 1/2 - 8	1 - 11 1/2	2 1/2 - 8	3.75 (95.3)	2.69 (68.3)	16.00 (406.4)	4.25 (108.0)	2.63 (66.8)
F20627	2 1/2 - 8	1 - 11 1/2	2 1/2 - 8	3.75 (95.3)	2.69 (68.3)	16.00 (406.4)	4.25 (108.0)	2.63 (66.8)
F20628	2 1/2 - 8	1 - 11 1/2	2 1/2 - 8	3.75 (95.3)	2.69 (68.3)	16.00 (406.4)	4.25 (108.0)	2.63 (66.8)
F20629	2 1/2 - 8	1 - 11 1/2	2 1/2 - 8	3.75 (95.3)	2.69 (68.3)	16.00 (406.4)	4.25 (108.0)	2.63 (66.8)
F20630	2 1/2 - 8	1 - 11 1/2	3 - 8	4.03 (102.4)	2.97 (75.4)	18.38 (466.9)	4.75 (120.7)	3.00 (76.2)
F20631	2 1/2 - 8	1 - 11 1/2	3 - 8	4.03 (102.4)	2.97 (75.4)	18.38 (466.9)	4.75 (120.7)	3.00 (76.2)
F20632	2 1/2 - 8	1 - 11 1/2	3 - 8	4.03 (102.4)	2.97 (75.4)	18.38 (466.9)	4.75 (120.7)	3.00 (76.2)
F20633	3 - 8	1 1/4 - 11 1/2	4 - 8	4.38 (111.3)	3.21 (81.5)	20.19 (512.8)	5.06 (128.5)	3.25 (82.6)
F20634	3 - 8	1 1/4 - 11 1/2	4 - 8	4.38 (111.3)	3.21 (81.5)	20.19 (512.8)	5.06 (128.5)	3.25 (82.6)
F20635	3 - 8	1 1/4 - 11 1/2	4 - 8	4.38 (111.3)	3.21 (81.5)	20.19 (512.8)	5.06 (128.5)	3.25 (82.6)
F20723	1 1/2 - 11 1/2	1/2 - 14	1 1/2 - 11/12	2.50 (63.5)	1.59 (40.4)	10.00 (254.0)	2.47 (62.7)	1.25 (31.8)
F20724	1 1/2 - 11 1/2	1/2 - 14	1 1/2 - 11/12	2.50 (63.5)	1.59 (40.4)	10.25 (260.4)	2.63 (66.8)	1.38 (35.1)

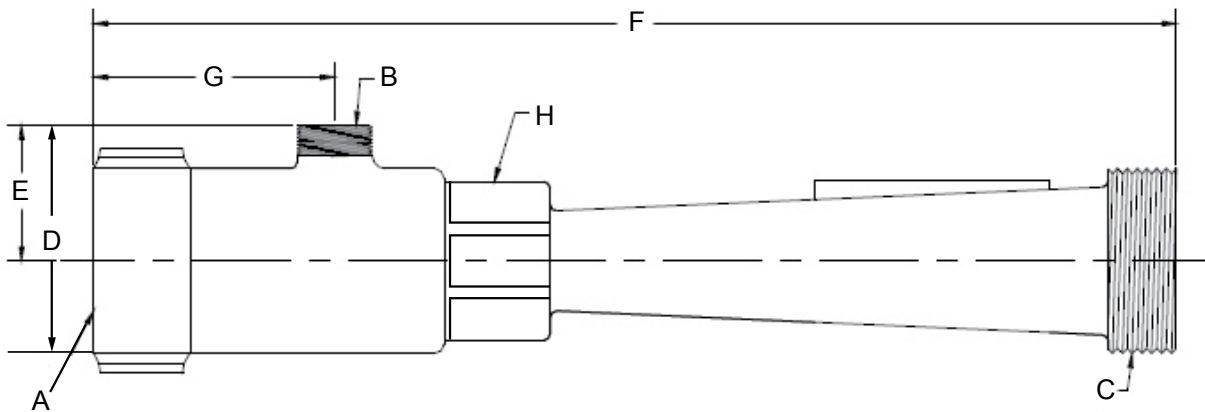


Figure 1: Dimensions