



# TECHNICAL DATA

## J-1 WET ALARM VALVE WITH EUROTRIM FOR SWEDISH MARKET

Viking Nordic AB, Staffans Väg 5, S-192 78 Sollentuna

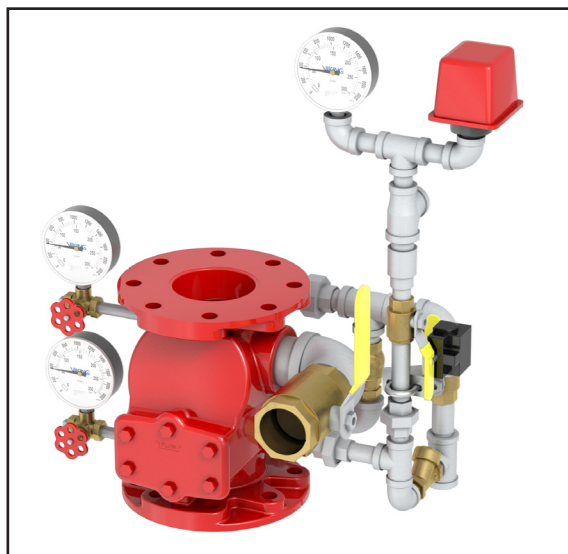
Telephone: +46-8-594-415-90 Fax: +46-8-591-280-18 Email: vikingsweden@vikingcorp.com

### 1. DESCRIPTION

The Viking Model J-1 Alarm Check Valve serves as a check valve by trapping pressurized water above the clapper and preventing reverse flow from sprinkler piping. The valve is designed to initiate an alarm during a sustained flow of water (such as the flow required by an open sprinkler) by operating an optional water motor alarm and/or alarm pressure switch. The valve is made suitable for use on variable pressure water supplies by adding the optional retard chamber to the standard trim.

### 2. LISTINGS AND APPROVALS

-  cULus Listed
-  FM Approved
-  CE Certified



### 3. ORDERING INFORMATION

To order a Viking Eurotrim follow our three step selection process:

TABLE 1: VALVE SIZES AND END CONNECTIONS							
Step 1: Base Valve & Trim	End Connections	End Connection Types	3"	4"	6"		8"
			DN80 89 mm	DN100 114 mm	DN150		DN200 219 mm
	Flange-Flange	ANSI	ET08235	ET08238	ET08241		ET08244
		PN10	ET09108	ET09109			ET09111
PN16		ET12388					
Flange-Groove	ANSI	ET08236	ET08239	--	ET08242	ET08245	
	PN10	ET09535	ET09536	--		ET09877	
	PN16			ET12389			
Groove-Groove	--	ET08237	ET08240	ET09405	ET08243	ET08246	



TABLE 2: ALARM TRIM	
Step 2: Alarm Trim	Part Number
	19419
Approval Type	
	Swedish Market

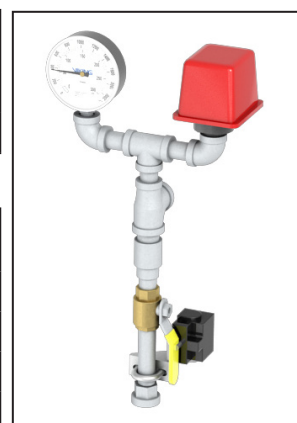


TABLE 3: OPTIONAL COMPONENTS	
Step 3: Optional Components	Part Number
	05904B
Component	
	Retard Chamber
	880214
Component	
	Monitoring Switch for Alarm Line Ball Valve
	8121960050
Component	
	Bracket for Monitoring Switch



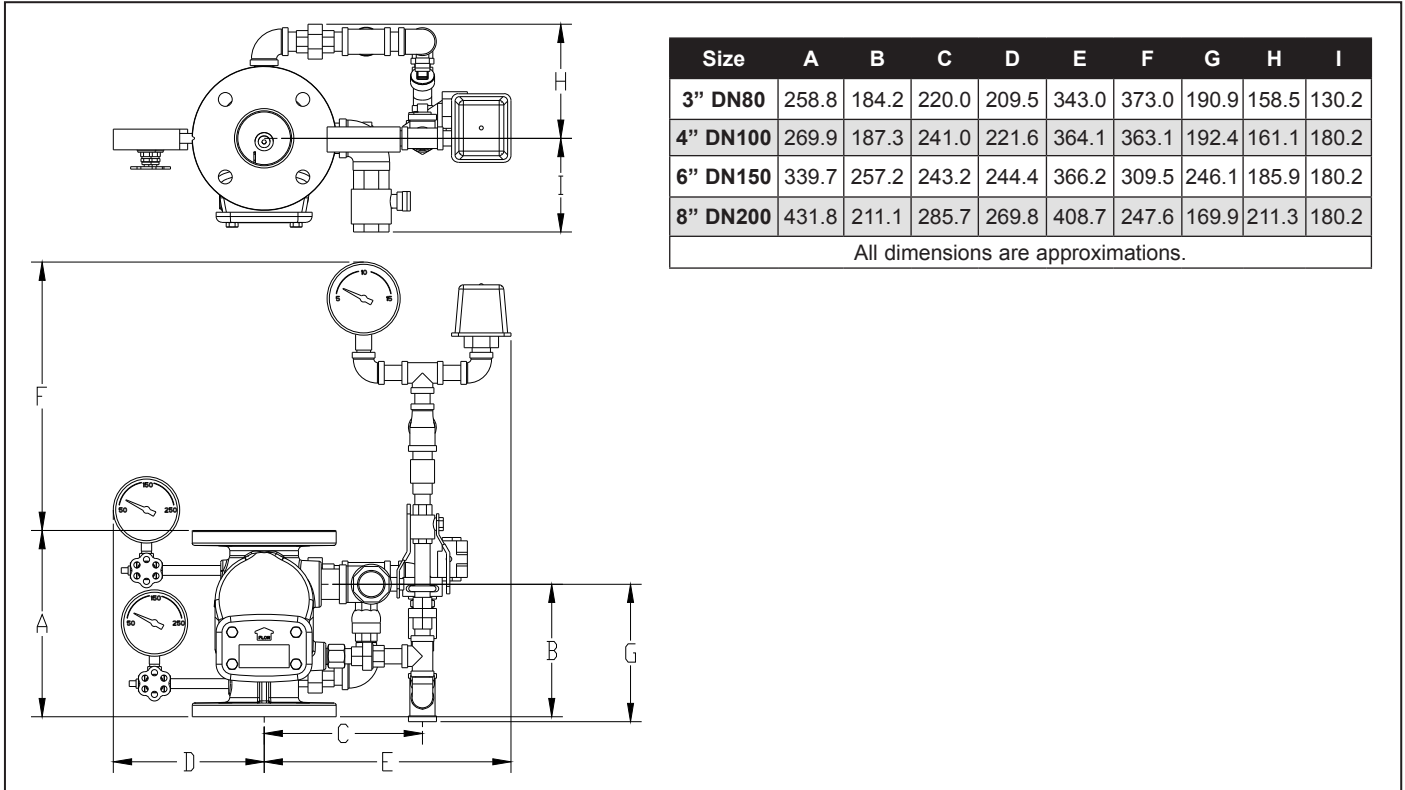
## TECHNICAL DATA

### J-1 WET ALARM VALVE WITH EUROTTRIM FOR SWEDISH MARKET

Viking Nordic AB, Staffans Väg 5, S-192 78 Sollentuna

Telephone: +46-8-594-415-90 Fax: +46-8-591-280-18 Email: vikingsweden@vikingcorp.com

#### 4. DIMENSIONS



#### 5. MOUNTING INSTRUCTIONS

1. Attach the gauges and their spigots to the valve (1)
2. Attach the base trim to the valve by tightening the three unions (2)
3. Attach the alarm trim to the base trim by tightening the union (3)
4. If a retard chamber is required the remove the  $\frac{1}{2}$ " x  $\frac{3}{4}$ " reducer from the alarm line (4) and insert the retard chamber. The reducer has been installed with PTFE tape to allow for easy removal.

