



TECHNICAL DATA




J-1 WET ALARM VALVE WITH EUROTTRIM FOR NORWAY MARKET

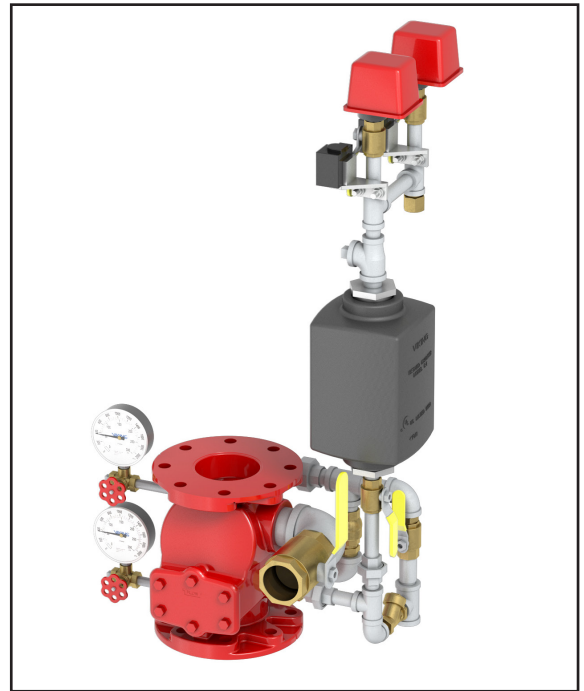
Viking Nordic AB, Staffans Väg 5, S-192 78 Sollentuna
Telephone: +46-8-594-415-90 Fax: +46-8-591-280-18 Email: vikingsweden@vikingcorp.com

1. DESCRIPTION

The Viking Model J-1 Alarm Check Valve serves as a check valve by trapping pressurized water above the clapper and preventing reverse flow from sprinkler piping. The valve is designed to initiate an alarm during a sustained flow of water (such as the flow required by an open sprinkler) by operating an optional water motor alarm and/or alarm pressure switch. The valve suitable for use on variable pressure water supplies as it includes a retard chamber as standard.

2. LISTINGS AND APPROVALS

-  **cULus Listed**
-  **FM Approved**
-  **CE Certified**



3. ORDERING INFORMATION

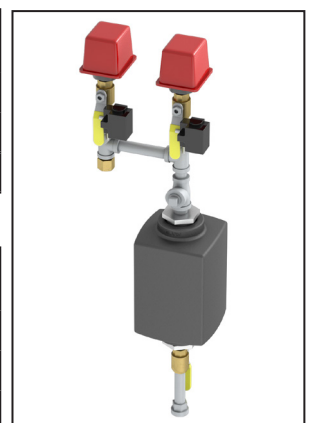
To order a Viking Eurotrim follow our three step selection process:

Step 1: Base Valve & Trim	TABLE 1: VALVE SIZES AND END CONNECTIONS						
	End Connections	End Connection Types	3"	4"	6"		8"
			DN80 89 mm	DN100 114 mm	DN150		DN200
					165 mm	168 mm	219 mm
Flange-Flange	ANSI	ET08235	ET08238	ET08241		ET08244	
	PN10	ET09108	ET09109			ET09111	
	PN16			ET12388			
Flange-Groove	ANSI	ET08236	ET08239	--	ET08242	ET08245	
	PN10	ET09535	ET09536	--		ET09877	
	PN16				ET12389		
Groove-Groove	--	ET08237	ET08240	ET09405	ET08243	ET08246	



Step 2: Alarm Trim	TABLE 2: ALARM TRIM	
	Part Number	Approval Type
	19422	Norway Market

Note: The Norway alarm trim includes a retard chamber as standard.



Step 3: Optional Components	TABLE 3: OPTIONAL COMPONENTS	
	Part Number	Component
	880214	Monitoring Switch for Alarm Line Ball Valve
8121960050	Bracket for Monitoring Switch	



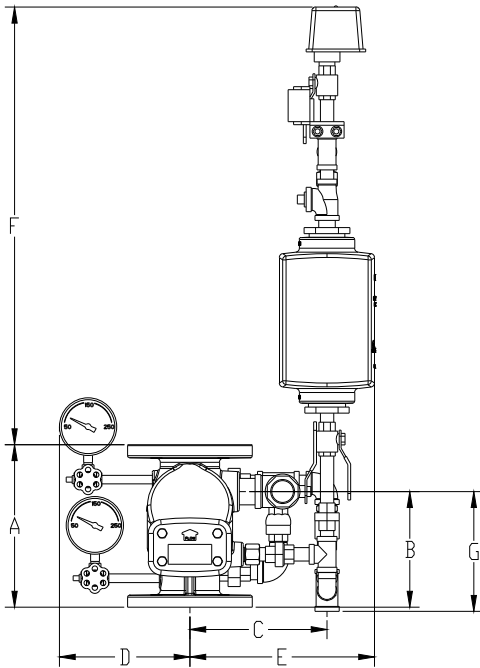
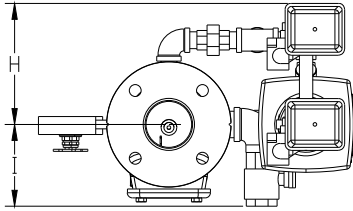
TECHNICAL DATA

J-1 WET ALARM VALVE WITH EUROTTRIM FOR NORWAY MARKET

Viking Nordic AB, Staffans Väg 5, S-192 78 Sollentuna

Telephone: +46-8-594-415-90 Fax: +46-8-591-280-18 Email: vikingsweden@vikingcorp.com

4. DIMENSIONS



Size	A	B	C	D	E	F	G	H	I
3" DN80	258.8	184.2	220.0	209.5	296.2	697.1	190.9	192.9	130.2
4" DN100	269.9	187.3	241.0	221.6	317.2	687.2	192.4	192.9	180.2
6" DN150	339.7	257.2	243.2	244.4	319.4	605.4	246.1	192.9	180.2
8" DN200	431.8	211.1	285.7	269.8	361.9	571.6	169.9	211.3	180.2

All dimensions are approximations.

5. MOUNTING INSTRUCTIONS

1. Attach the gauges and their spigots to the valve (1)
2. Attach the base trim to the valve by tightening the three unions (2)
3. Attach the alarm trim to the base trim by tightening the union (3)

