



TECHNICAL DATA

RELEASING DEVICES

The Viking Corporation | 210 N Industrial Park Drive | Hastings MI 49058

Viking Special Hazards | Technical Services: 877-384-5464 | Email: techsvcs@vikingcorp.com | www.vikinggroupinc.com

The technical data described herein is for components of the Viking VSH200 and VSH1230 Clean Agent Systems.

Visit the Viking website for the latest edition of the technical data and system manuals.

1. DESCRIPTION

Viking VSH1230 and VSH200 Fire Extinguishing Systems use an electric releasing device to activate each cylinder valve, which in turn opens the extinguishing agent container to release extinguishing agent to the system.

- In order for the valve to open, the release device must have an electric signal from the extinguishing system.

In Multi Container Systems, an electric release is used on the master cylinder only and each additional cylinder uses a pneumatic release device. The pneumatic release device is threaded onto the valve and is equipped with two connections for pneumatic pilot line(s) (or one pilot and a pilot line safety valve) to be attached via a pilot line adapter.

Optional manual release and pneumatic/manual release device assemblies are available. The manual release device and the pneumatic/manual release device fits onto the electric release device and is used to activate the cylinder valve, which in turn opens the extinguishing agent container to release extinguishing agent to the system. When a manual release device or a pneumatic/manual release device is installed, a pneumatically actuated limit switch (pressure switch) is required on the pipeline to indicate a release per NFPA 2001.

- The manual release and pneumatic/manual release device allow the system to be activated by pulling the lock pin and pressing down the release lever.

2. LISTINGS AND APPROVALS



UL Listed: Clean Agent Extinguishing System Unit



FM Approved: Clean Agent Fire Extinguishing System

3. TECHNICAL DATA

Specifications

- Maximum Operating Temperature:
UL/ULC - 0°F to 81.5°F (-18°C to 27.5°C),
FM - 0°F to 122°F (-18°C to 50°C)

Electric Release Device

- Nominal Voltage: 24 V / DC +/- 15%
- Nominal Current: 0.5 A +/- 10%
- Max. Supervision Current: 20 mA
- On-Time: 100%

Material Standards

Electric Release Device: Case-Stainless Steel;
Cap Nut and Flange-Brass UNS-C36000

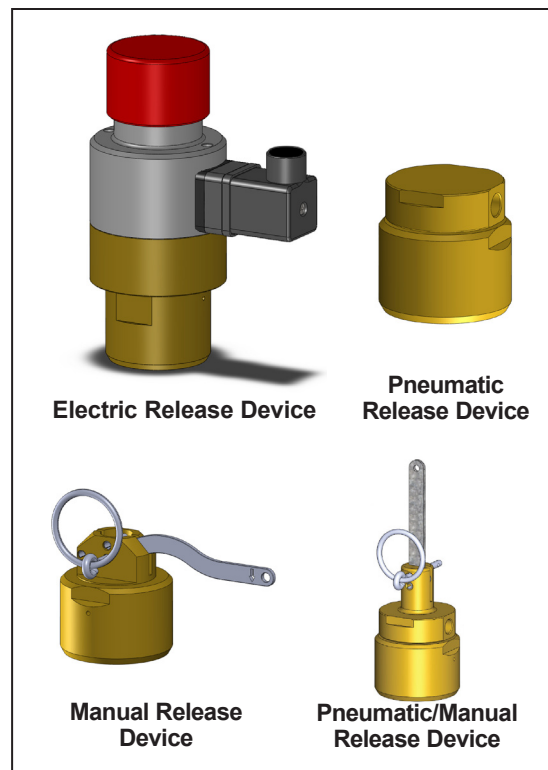
Pneumatic Release Device: Brass UNS-C36000

Manual Release: Brass UNS-C36000

Pneumatic/Manual Release: Brass UNS-C36000

Ordering Information

Refer to Table 1.



Electric Release Device

Pneumatic Release Device

Manual Release Device

Pneumatic/Manual Release Device

TABLE 1
VSH1230 and VSH200 Fire Extinguishing System

Release Device	Part Number
Electrical Release	889323D*
Required Reset Tool	887645**
Manual Release	887668
Pneumatic/Manual Release	887670
Pneumatic Release	887669
NPT Conduit Solenoid Connector, Replacement	23294
*Includes Conduit Solenoid Connector. If a replacement is needed, order part number above.	
**Additional or replacement reset tool can be ordered separately.	



WARNING: Cancer and Reproductive Harm-
www.P65Warnings.ca.gov

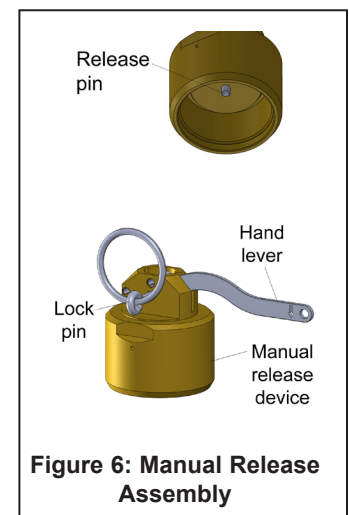
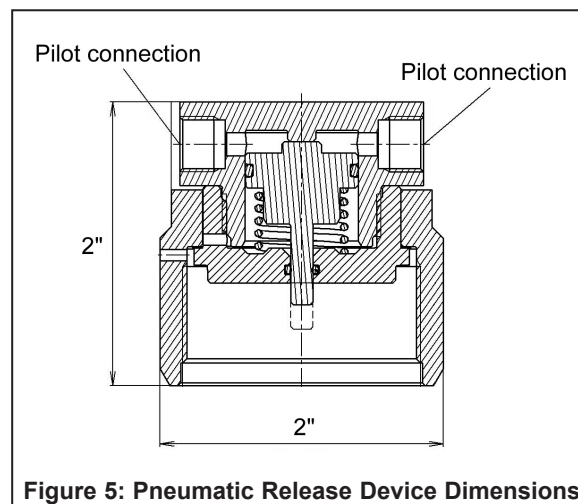
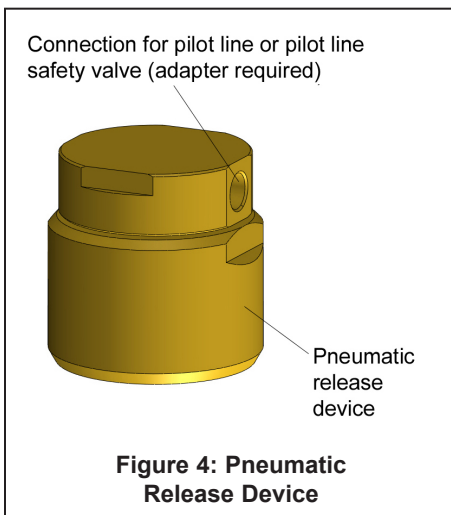
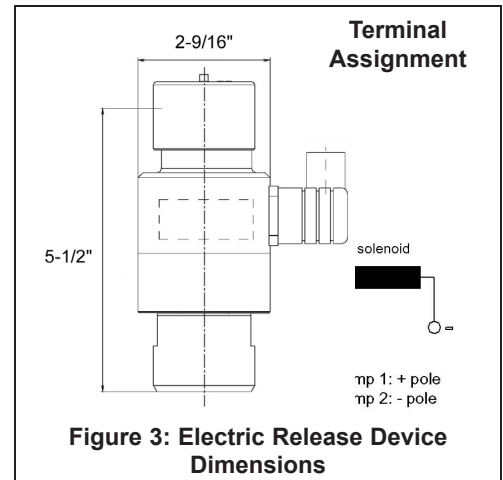
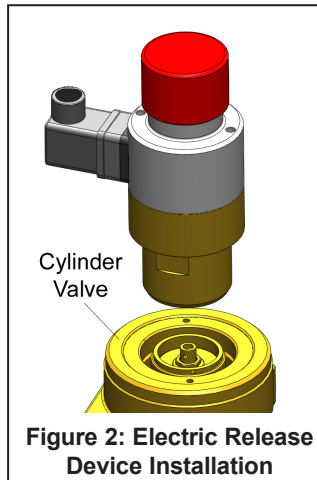
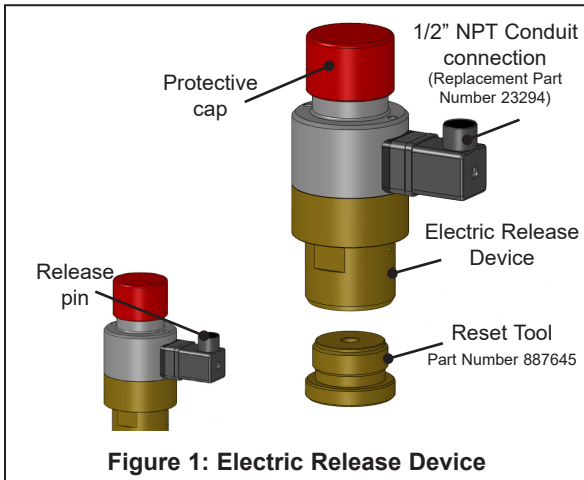


TECHNICAL DATA

RELEASING DEVICES

The Viking Corporation | 210 N Industrial Park Drive | Hastings MI 49058

Viking Special Hazards | Technical Services: 877-384-5464 | Email: techsvcs@vikingcorp.com | www.vikinggroupinc.com





TECHNICAL DATA

RELEASING DEVICES

The Viking Corporation | 210 N Industrial Park Drive | Hastings MI 49058

Viking Special Hazards | Technical Services: 877-384-5464 | Email: techsvcs@vikingcorp.com | www.vikinggroupinc.com

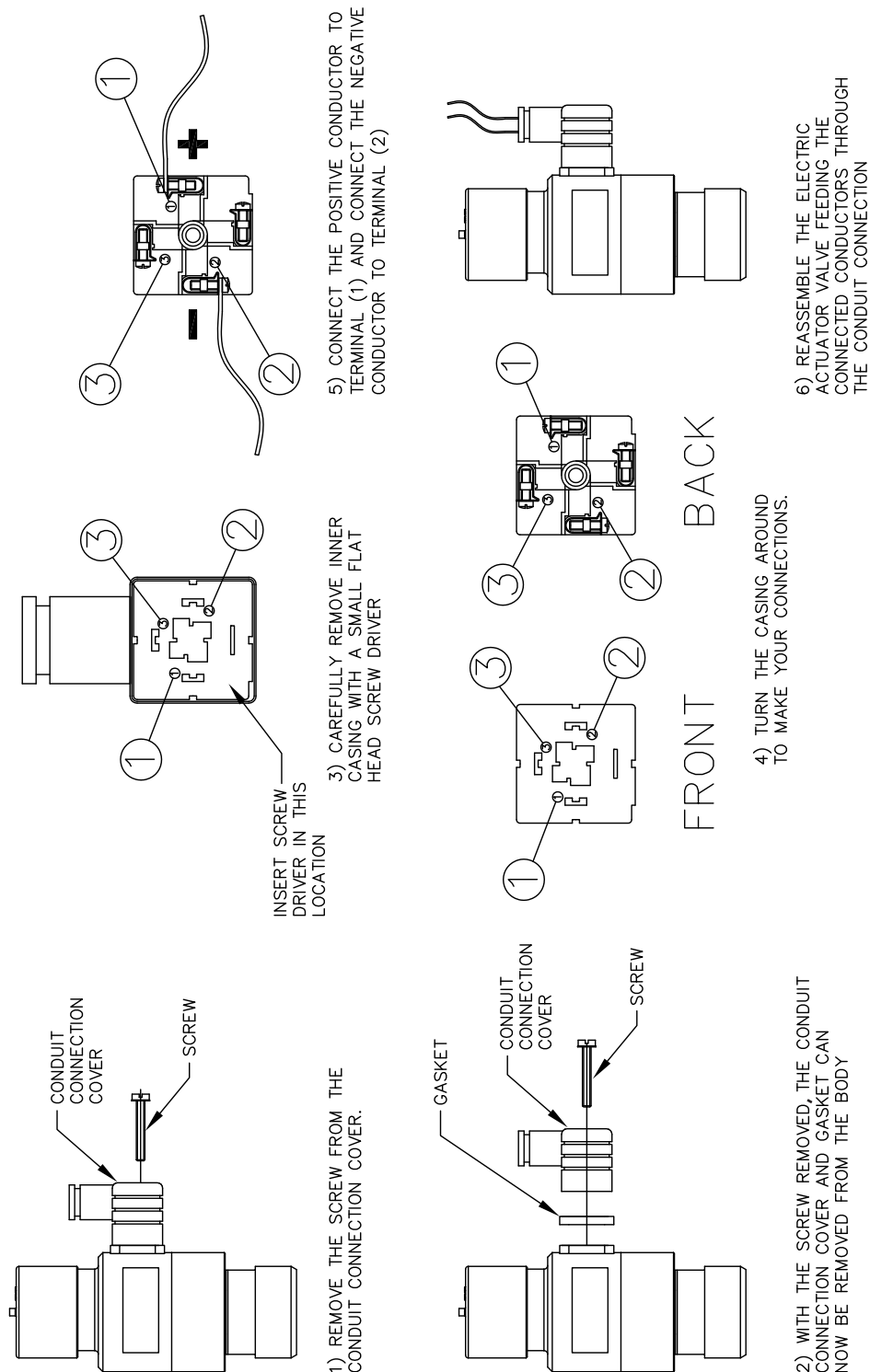


Figure 6: Electric Release Device Wiring Diagram