



**GUARDIAN**

FIRE EQUIPMENT, INC.  
MIAMI, FL

Ph. 800.327.6584 • Fax 800.827.3869

**DETAIL AND SUBMITTAL SHEET**

**5300-5500 Series - Globe Valves, Ball Valves and Caps**

Project/Location: \_\_\_\_\_ Date: \_\_\_\_\_

Architect/Engineer: \_\_\_\_\_

Contractor: \_\_\_\_\_

*Appropriate Selection*

**Globe Valves - Female x Male** - Used as fire hose outlet connections. Female NPT inlet x male hose thread outlet, cast brass

Model No.	Size	A	B	C	D
<input type="checkbox"/> 5310	2 1/2" x 2 1/2"	5 1/8"	10 7/8"	7"	2 5/8"

Optional Finish:  -B Polished Brass  -C Rough Chrome Plated  -D Polished Chrome Plated

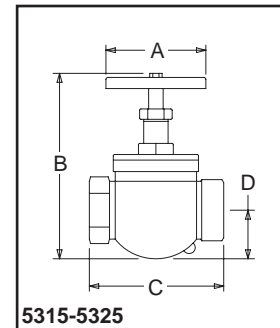
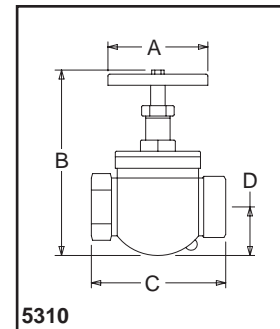
Threads:  NST  Other \_\_\_\_\_

**Globe Valves - Female x Female** - Used with hose rack assemblies and as drain outlets. Female NPT inlet and outlet, cast brass

Model No.	Size	A	B	C	D
<input type="checkbox"/> 5315*	1/2" x 1/2"	2 1/8"	3 3/8"	1 7/8"	5/8"
<input type="checkbox"/> 5320*	1/2" x 1/2"	3 3/8"	5 3/4"	3 3/8"	1 1/4"
<input type="checkbox"/> 5325	2 1/2" x 2 1/2"	5 1/8"	10 7/4"	7"	2 5/8"

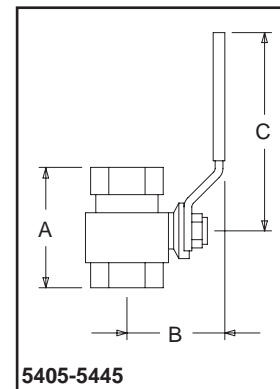
Optional Finish:  -B Polished Brass  -C Rough Chrome Plated  -D Polished Chrome Plated

\*Variation:  -EXT Extended stems (up to 36"). Specify Length: \_\_\_\_\_



**Ball Valves** - Used where rapid "on/off" control of flow is required. Suitable for water, oil, gas or steam. Forged brass body, chrome plated ball, teflon seals, vinyl covered handle, UL listed and FM approved sizes 1/2" to 2". Female NPT inlet/outlet, positive closure in either flow direction.

Model No.	Size	Port	A	B	C	Pressure (psi) WOG
<input type="checkbox"/> 5405	1/2"	1/2"	2 1/8"	1 5/16"	3 1/8"	600
<input type="checkbox"/> 5410	3/4"	3/4"	2 7/16"	1 13/16"	3 13/16"	600
<input type="checkbox"/> 5415	1"	1"	3"	1 15/16"	3 13/16"	600
<input type="checkbox"/> 5120	1 1/4"	1 1/4"	3 5/16"	2 1/8"	3 13/16"	600
<input type="checkbox"/> 5425	1 1/2"	1 1/2"	3 11/16"	2 11/16"	5 7/16"	600
<input type="checkbox"/> 5430	2"	2"	4 15/16"	2 15/16"	5 7/16"	400
<input type="checkbox"/> 5435	2 1/2"	2 1/2"	5 11/16"	4"	6 13/16"	400
<input type="checkbox"/> 5440	3"	3"	6 5/16"	4 5/16"	6 13/16"	400
<input type="checkbox"/> 5445	4"	4"	8"	5 5/16"	7 5/16"	400



**Caps with Chains** - Used to protect hose thread outlets on valves and hydrants. Cast brass caps (pin lugs)\* or red plastic caps (rocker lugs).

Size	3/4"	1"	1 1/2"	2"	2 1/2"	3"	4"	3"
Brass* Model No.	<input type="checkbox"/> 5505	<input type="checkbox"/> 5510	<input type="checkbox"/> 5515	<input type="checkbox"/> 5520	<input type="checkbox"/> 5525	<input type="checkbox"/> 5530	<input type="checkbox"/> 5535	<input type="checkbox"/> 5540
Plastic Model No	---	---	<input type="checkbox"/> 5515P	---	<input type="checkbox"/> 5525P	---	---	---

Optional Finish:  -B Polished Brass  -C Rough Chrome Plated  -D Polished Chrome Plated

Threads:  NST  Other \_\_\_\_\_

\* Optional:  -RL: Add rocker lugs

