

BlazeMaster®
FIRE SPRINKLER FITTINGS

FEATURES

- Available in ¾" x ½" and 1" x ½"
- Complies with NFPA-13, 13R and 13D requirements
- Use sprinkler manufacturer's wrench for sprinkler install or removal (**No special wrench required to remove sprinkler head**)
- Large lead chamfer will not remove PTFE tape or thread sealant upon sprinkler assembly
- No lead-containing metal in contact with fluid. NSF Certified for compliance with NSF/ANSI 61, Annex G (Approved for use with potable water intended for human consumption)
- Dezincification and corrosion resistant
- Wide wrench flats for hold back
- Reduced sprinkler installation torque vs. brass
- Made in USA
- U.S. Patent 6,186,558



**THE NEW PATENTED
NIBCO® BRASTIC™
SPRINKLER HEAD ADAPTER
REINVENTS
SPRINKLER INSTALLATION**

UNIQUE DESIGN PROVIDES GREATER RESISTANCE TO RADIAL STRESS ALONG THE ENTIRE LENGTH OF THE SEALING THREADS

SPRINKLER SEALS ENTIRELY AGAINST CPVC WHEN PROPERLY INSTALLED ELIMINATING A POTENTIAL LEAK PATH

IMPROVED TORQUE PERFORMANCE

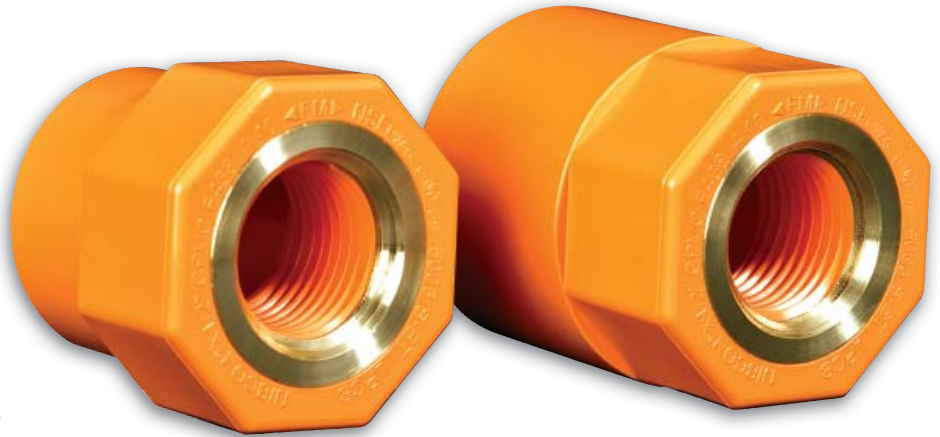
ROBUST STARTER THREAD TO PREVENT SPRINKLER CROSS THREADING

BRASTIC™ Sprinkler Head Adapters

SIZE RANGE – 3/4" x 1/2" and 1" x 1/2" (Socket x FNPT)

FEATURES –

- Sprinkler seals entirely against CPVC when properly installed eliminating a potential leak path
- Unique design provides greater resistance to radial stress along the entire length of the sealing threads
- Robust starter thread to prevent sprinkler cross threading
(Large lead chamfer will not remove PTFE tape or thread sealant upon sprinkler assembly)
- Use sprinkler manufacturer's wrench for sprinkler install or removal
(No special wrench required to remove sprinkler head)
- No lead-containing metal in contact with fluid. NSF Certified for compliance with NSF/ANSI 61, Annex G.
(Approved for use with potable water intended for human consumption)
- Dezincification and corrosion resistant
- Wide wrench flats for hold back
- Improved torque resistance
- Made in USA
- U.S. Patent 6,186,558

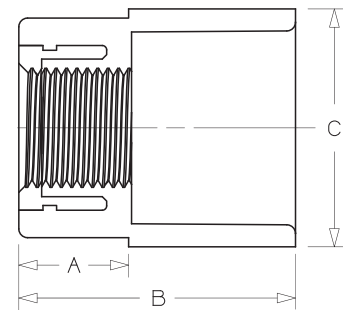
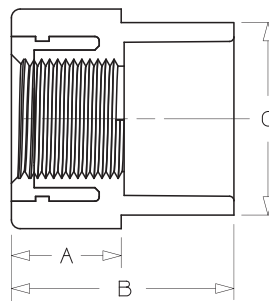


LISTINGS AND APPROVALS –

- UL 1821 Listed
 - Exposed system risers NFPA 13D, 13R
 - Exposed basement NFPA 13D (solid wood joist)
 - Extended coverage (exposed)
 - 20' spacing on pendent in lieu of 15'
 - Exposed extended coverage sidewall sprinkler listing for exposed pipe & fittings
 - Permitted for use with return air plenums with no set-back at ceiling openings per NFPA 90A
- ULC Listed
- Factory Mutual Approved
 - Factory Mutual Approval exposed
 - Factory Mutual Approval above drop-in ceilings
- LPCB Approved
- NSF Certification -pw Annex-G

3/4" x 1/2"

1" x 1/2"



UNIV. FIG. NO.	NOM. SIZE	APPROX. NET WT./LBS.	DIM. A INCHES	DIM. B INCHES	DIM. C INCHES	JOINT
5003-S-BT	1"X1/2"	0.17	.75	1.89	1.625	SXFNPT
5003-S-BT	3/4"x1/2"	0.15	.75	1.52	1.315	SXFNPT

INSTALLATION INSTRUCTIONS –

For complete installation instructions see NIBCO's "Installation and Design Manual" or for Brastic installation instructions reference form No. IM-BLBF-0910.




BlazeMaster® is a registered trademark of The Lubrizol Corporation.

Sprinkler Head Installation Instructions - Brastic™ CPVC Thread Fittings

NIBCO recommends the use of either pipe joint compound OR PTFE tape when installing sprinkler heads – NEVER use both.

When using pipe joint compound:

- NIBCO recommends IPS® / Weld-On “Blue Seal Plus” Pipe Joint Compound with PTFE.
- Additional manufacturers of joint compounds are acceptable only if confirmed compatible for use with CPVC via the System Compatible program – reference www.systemcompatible.com for the latest listing of approved manufacturers. Compatible compounds will carry the  mark.
- Thread seal compound is to be applied ONLY to the male thread.
- Always follow the compound manufacturer’s application / installation instructions.

When using PTFE tape:

- Always use a quality PTFE tape, having a thickness of no less than .0025” (2.5 mil) and meets or exceeds mil spec MIL-T-27730A.
- On the male sprinkler thread, start with the first full thread and wrap clockwise making sure all threads are fully covered. Make sure the initial wrap fully covers the thread end of the sprinkler head – two to three wraps is sufficient – DO NOT over apply.
- Note: PTFE tape acts as a lubricant, DO NOT over tighten.

Prior to installing the sprinkler head, the sprinkler head adapter fitting should be visually inspected or probed with a dowel to ensure the waterway and threads are clear of any excess cement. All cemented fittings shall be given adequate cure time as recommended in the cure chart tables located in the NIBCO BlazeMaster CPVC Fire Sprinkler System Installation and Design Manual. CAUTION: it is unacceptable practice to assemble sprinklers into sprinkler head adapter fittings prior to solvent cementing.

Sprinkler Installation:

- After applying either pipe joint compound OR PTFE tape to the sprinkler head, thread assembly “finger tight” into the Brastic sprinkler head adapter fitting. Testing indicates **10 to 20ft. lbs.** of torque is adequate to obtain a leak free seal. This amount of torque equates to **1/4 to 1 turn** beyond finger tight. NOTE: Over tightening will result in damaged threads, DO NOT apply more than 30ft. lbs. of torque.
- DO NOT use conventional pipe wrenches that can damage fittings – use an adjustable wrench on the flats of the Brastic fitting or a strap wrench. For the sprinkler head, use only the manufacturer’s approved wrench.