

## Fig. 316 - Stand Pipe

### Fig. 316T - Threaded Stand Pipe

**Size Range** — 1" thru 8" pipe

**Material** — Carbon Steel

**Function** — Fig. 316 provides the support base for a floor stanchion support. Use with Fig. 311, Fig. 312, Fig. 313, Fig. 314, Fig. 315, Fig. 317 or Fig. 318. Fig. 316T provides a threaded support base for a floor stanchion support where vertical adjustment is required. Use with Fig. 317A or Fig. 318A or Fig. 319 and use with Fig. 311 thru Fig. 318.

**Finish** — Plain

**Note** — Available in Electro-Galvanized and HDG finish or Stainless Steel materials.

**Order By** — Figure number, pipe size, "L" dimension and finish

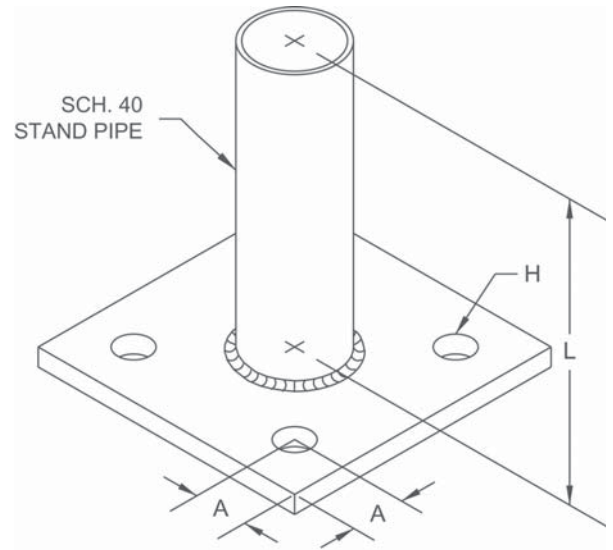


FIG. 316

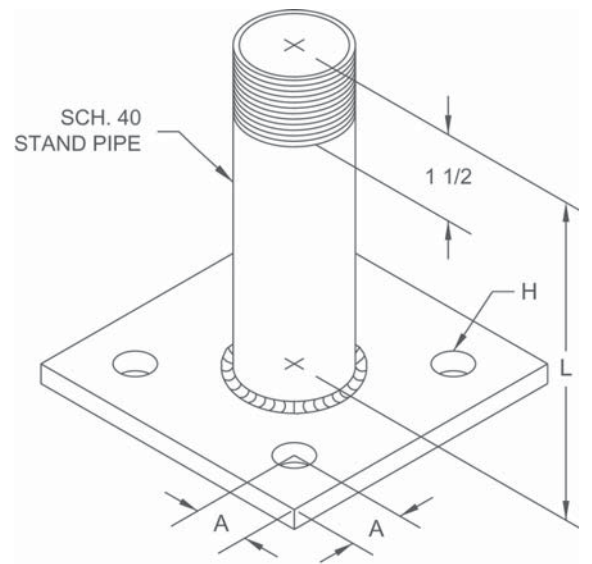


FIG. 316T

#### Dimensions • Weights

Stand Pipe Size	A	H	Plate Size	Approx. Wt./100*
1	1	1/2	6 sq.	423
1 1/4	1	1/2	6 sq.	482
1 1/2	1	1/2	6 sq.	525
2	1	1/2	6 sq.	748
2 1/2	1 1/8	5/8	7 1/2 sq.	1377
3	1 1/8	5/8	9 sq.	1555
4	1 1/4	3/4	11 sq.	2514
6	1 1/2	7/8	13 1/2 sq.	4469
8	1 1/2	1	16 sq.	10120

\* Weight is based on "L" dimension of 1'0"