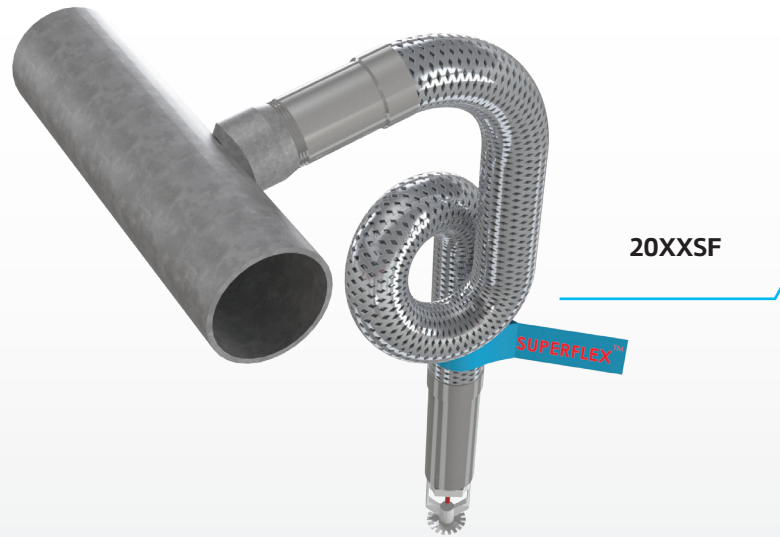


FlexHead® SuperFlex® Flexible Fire Sprinkler Drops



The ultimate solution in flexible fire sprinkler drops.

Description

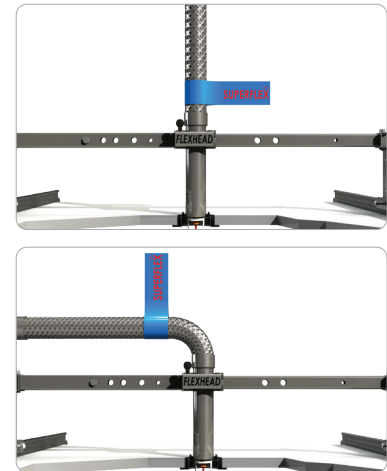
No need to measure or count the number of bends, no leaks, no worries! SuperFlex provides all the flexibility needed for an error-free installation.

Approved with MPT24BKT1, ADO16BKT3 and ADO24BKT3 brackets

Features & Benefits

- Only **fully welded** commercial fire sprinkler drop in the industry
- UL listed for tight 2-inch bend radius
- Increased bends create more flexibility during installation
- Hose can be bent up to 12 bends* per UL listing

**12 bends are only applicable for the 6 ft. hose. Please reference chart on the back for additional UL & FM specifications.*



Superflex commercial fire sprinkler drops come with hose that can be curved or straight depending on your needs.

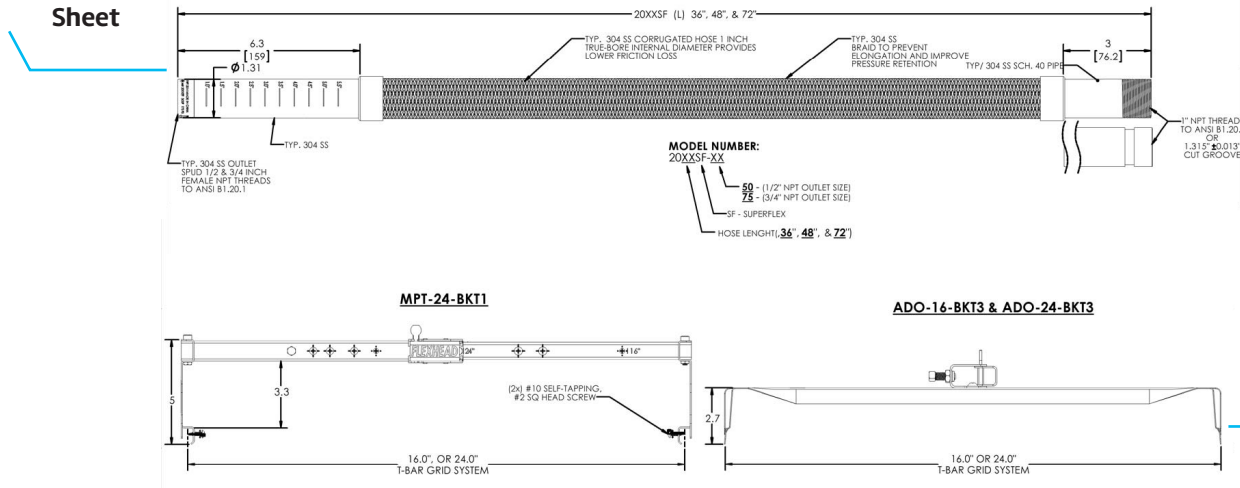
Please contact your local ASC Engineered Solutions sales representative for more information about the Flexhead Superflex product.



asc-es.com

Building connections that last™

Superflex Specification Sheet



Bracket Systems

1" Internal Diameter (I.D.) Hose Series

Model Number	Outlet Orifice Size	Hose Assembly Length	Min. Bend Radius		Max. No. of 90° Bends		Equivalent Length of 1 in. Schedule 40 Pipe (ft)					Max. Rated Working Pressure		
			FM	UL	FM	UL	UL	FM 5.6 k-factor	FM 8.0 k-factor	FM 11.2 k-factor	FM 14.0 k-factor	FM 16.8 k-factor	FM	UL
No.	In./cm	In./mm	In./mm	In./mm	No.	No.	Ft./m	Ft./m	Ft./m	Ft./m	Ft./m	Ft./m	PSI/Kpa	PSI/Kpa
2036SF-50		36 (914)			2	5	16.2 (4.9)	16.2 (4.9)	16.9 (5.1)	11.5 (3.5)	—	—		175 (1205)
2048SF-50	1/2 (1.27)	48 (1219)			3	8	28.7 (8.7)	28.7 (8.7)	29.3 (8.9)	15.4 (4.7)	—	—		175 (1205)
2072SF-50		72 (1828)			4	12	53.9 (16.4)	53.9 (16.4)	54.3 (16.5)	23.2 (7.0)	—	—		175 (1205)
2036SF-75		36 (914)	7 (178.0)	2 (50.8)	2	5	29 (8.8)	—	21.5 (6.5)	21.6 (6.5)	21.8 (6.6)	22 (6.7)	175 (1205)	175 (1205)
2048SF-75	3/4 (1.90)	48 (1219)			3	8	44 (13.4)	—	30.5 (9.2)	30.6 (9.3)	31.1 (9.4)	30.8 (9.3)		175 (1205)
2072SF-75		72 (1828)			4	12	70 (21.3)	—	48.5 (14.7)	48.8 (14.8)	49.9 (15.2)	48.6 (14.8)		175 (1205)

Notes:

- Model Numbers: The "SF" designates SuperFlex Hose Series. The "50" designates 1/2" Outlet Hose Series. The "75" designates 3/4" Outlet Hose Series.
- Max Ambient Temperature Rating on all model numbers is 300° F (148° C).
- 20XXSF, SuperFlex Hose, is UL listed with MPT-24-BKT1, ADO16BKT3 and ADO24BKT3 Brackets with largest k-factor of 16.8.

- Equivalent Lengths are shown with maximum number of 90° bends at the minimum bend radius per agency. 2- 45° or 3-30° bends equal 1-90° bend. Different values were obtained by FM and UL due to the difference in minimum bend radius, testing protocol and calculation methods. Please see individual standards for more information relative to friction loss (equivalent length of pipe).
- FM equivalent length calculation includes sprinkler head friction loss.
- See listing(s) approval agency for the latest approval details.



asc-es.com

Building connections that last™

