



**TABLE OF CONTENTS**

Pendent	{	VK470, 3.0 (43) K factor, pendent.....	F-1
		VK471, 3.7 (53) K factor, pendent .....	F-1
		VK430, 4.3 (62) K factor, pendent.....	F-1
		VK468, 4.9 (71) K factor, pendent.....	F-1
		VK466, 5.2 (75) K factor, pendent.....	F-1
		VK472, 5.8 (84) K factor, pendent.....	F-2
		VK458, 7.4 (107) K factor, pendent (3/4" NPT) .....	F-2
Domed Concealed	{	VK468-D, 4.9 (71) K factor, domed concealed pendent .....	F-3
Horizontal Sidewall	{	VK479, 3.0 (43) K factor, horizontal sidewall.....	F-4
		VK486, 4.0 (58) K factor, horizontal sidewall.....	F-4
		VK484, 4.2 (60) K factor, horizontal sidewall.....	F-4
		VK460, 5.8 (84) K factor, horizontal sidewall.....	F-4
		VK480, 4.0 (58) K factor, flat plate concealed horizontal sidewall .....	F-5
		VK490, 5.8 (84) K factor, flat plate concealed horizontal sidewall .....	F-5
Flat Concealed Pendent	{	VK496, 3.0 (43) K factor, flat concealed pendent .....	F-6
		VK495, 3.7 (53) K factor, flat concealed pendent.....	F-6
		VK494, 4.9 (71) K factor, flat concealed pendent .....	F-6
		VK498, 5.8 (84) K factor, flat concealed pendent .....	F-6
Upright	{	VK467, 4.9 (71) K factor, upright .....	F-7
		Custom Finish Ordering Information (cover plates and frame-style sprinklers) .....	F-8
Dry	{	VK449, 4.0 (57.7) K factor, horizontal sidewall.....	F-9

**Notes**

1. Unless otherwise indicated, all cover plates and escutcheons are sold separately.
2. Cover plates, escutcheons, and sprinklers are available in custom colors at an additional charge. See page F-8 for details.
3. Refer to Viking technical data pages for complete product specifications. You may print or download technical data by visiting [www.vikinggroupinc.com](http://www.vikinggroupinc.com).
4. List prices effective July 9, 2022. Supersedes February 2022 list price book.
5. All sales by Viking are subject to the Terms & Conditions found on the last page of this book.

*Freedom® is a registered trademark of The Viking Corporation*



**Freedom®**  
**Residential**  
**Glass Bulb**  
**Pendent**

<b>SIN:</b>	VK470
<b>K Factor:</b>	3.0 (43)
<b>Thread Size:</b>	1/2 inch NPT
<b>Base Part #:</b>	17147



**Freedom®**  
**Residential**  
**Glass Bulb**  
**Pendent**

<b>SIN:</b>	VK471
<b>K Factor:</b>	3.7 (53)
<b>Thread Size:</b>	1/2 inch NPT
<b>Base Part #:</b>	25642

Finish	Temp	Part #	IPG	List Price
Standard Brass	155°F	17147AB	V176	\$73.12
Standard Brass	175°F	17147AD	V176	\$73.12
Chrome	155°F	17147FB	V176	\$79.14
Chrome	175°F	17147FD	V176	\$79.14
White-Polyester	155°F	17147MB/W	V176	\$79.14
White-Polyester	175°F	17147MD/W	V176	\$79.14
Nickel PTFE (ENT) <sup>1</sup>	155°F	17147JNB	V188.A	\$101.85
Nickel PTFE (ENT)	175°F	17147JND	V188.A	\$101.85
Std Sprinkler Wrench		21475M/B	V207	\$103.93
Wrench for Recessed		13655W/B	V207	\$200.28

Finish	Temp	Part #	IPG	List Price
Standard Brass	155°F	25642AB	V176	\$73.12
Standard Brass	175°F	25642AE	V176	\$73.12
Chrome	155°F	25642FB	V176	\$79.14
Chrome	175°F	25642FE	V176	\$79.14
White-Polyester	155°F	25642MB/W	V176	\$79.14
White-Polyester	175°F	25642ME/W	V176	\$79.14
Nickel PTFE (ENT) <sup>1</sup>	155°F	25642JNB	V188.A	\$101.85
Nickel PTFE (ENT)	175°F	25642JNE	V188.A	\$101.85
Std Sprinkler Wrench		21475M/B	V207	\$103.93
Wrench for Recessed		13577W/B	V207	\$200.28



**Freedom®**  
**Residential**  
**Glass Bulb**  
**Pendent**

<b>SIN:</b>	VK430
<b>K Factor:</b>	4.3 (62)
<b>Thread Size:</b>	1/2 inch NPT
<b>Base Part #:</b>	09530



**Freedom®**  
**Residential**  
**Glass Bulb**  
**Pendent**

<b>SIN:</b>	VK468
<b>K Factor:</b>	4.9 (71)
<b>Thread Size:</b>	1/2 inch NPT
<b>Base Part #:</b>	13637

Finish	Temp	Part #	IPG	List Price
Standard Brass	155°F	09530AB	V176	\$73.12
Standard Brass	175°F	09530AD	V176	\$73.12
Chrome	155°F	09530FB	V176	\$79.14
Chrome	175°F	09530FD	V176	\$79.14
White-Polyester	155°F	09530MB/W	V176	\$79.14
White-Polyester	175°F	09530MD/W	V176	\$79.14
Nickel PTFE (ENT) <sup>1</sup>	155°F	09530JNB	V188.A	\$101.85
Nickel PTFE (ENT)	175°F	09530JND	V188.A	\$101.85
Std Sprinkler Wrench		21475M/B	V207	\$103.93
Wrench for Recessed		13655W/B	V207	\$200.28

Finish	Temp	Part #	IPG	List Price
Standard Brass	155°F	13637AB	V177	\$71.34
Standard Brass	175°F	13637AD	V177	\$71.34
Chrome	155°F	13637FB	V177	\$77.21
Chrome	175°F	13637FD	V177	\$77.21
White-Polyester	155°F	13637MB/W	V177	\$77.21
White-Polyester	175°F	13637MD/W	V177	\$77.21
Nickel PTFE (ENT) <sup>1</sup>	155°F	13637JNB	V188.A	\$101.85
Nickel PTFE (ENT)	175°F	13637JND	V188.A	\$101.85
Std Sprinkler Wrench		21475M/B	V207	\$103.93
Wrench for Recessed		13577W/B	V207	\$200.28

Select Escutcheons - Recessed Pendent Sprinklers\*



**Recessed Escutcheon**  
**Model E-1 (push-on)**  
*(includes cup & adapter)*  
*(OD = 3-1/16" / 78 mm)*

Finish	Size	Part #	IPG	List Price
Polished Chrome	1/2"	06419AF	V200	\$10.77
White	1/2"	06419AM/W	V200	\$10.77

\*Refer to Page H-1 for complete list of escutcheons

Select Escutcheons - Recessed Pendent Sprinklers\*



**Threaded Escutcheon**  
**Model E-2 (thread-on)**  
*(includes cup & adapter)*  
*(OD = 3-1/8" / 80 mm)*

Finish	Size	Part #	IPG	List Price
Polished Chrome	1/2"	11038F	V200	\$10.81
White	1/2"	11038M/W	V200	\$10.81

\*Refer to Page H-1 for complete list of escutcheons

(1) Electroless Nickel PTFE (ENT) plating is UL Listed and FM Approved for corrosion resistance.

NOTE: Select Freedom® sprinklers are also available in "Lead Free" versions. Refer to technical datasheets for details.

(Lead content complies with definition of 'Lead Free' established in the Reduction of Lead in Drinking Water Act, S.3874)



**Freedom®**  
**Residential**  
**Glass Bulb**  
**Pendant**

**SIN:** VK466  
**K Factor:** 5.2 (75)  
**Thread Size:** 1/2 inch NPT  
**Base Part #:** 13781

Finish	Temp	Part #	IPG	List Price
Standard Brass	155°F	13781AB	V176	\$74.12
Standard Brass	175°F	13781AD	V176	\$74.12
Chrome	155°F	13781FB	V176	\$79.14
Chrome	175°F	13781FD	V176	\$79.14
White-Polyester	155°F	13781MB/W	V176	\$79.14
White-Polyester	175°F	13781MD/W	V176	\$79.14
Nickel PTFE (ENT) <sup>1</sup>	155°F	13781JNB	V188.A	\$101.85
Nickel PTFE (ENT)	175°F	13781JND	V188.A	\$101.85
Std Sprinkler Wrench		21475M/B	V207	\$103.93
Wrench for Rcsd w/Caps		13655W/B	V207	\$200.28



**Freedom®**  
**Residential**  
**Glass Bulb**  
**Pendant**

**SIN:** VK472  
**K Factor:** 5.8 (84)  
**Thread Size:** 1/2 inch NPT  
**Base Part #:** 16130

Finish	Temp	Part #	IPG	List Price
Standard Brass	155°F	16130AB	V178	\$79.63
Standard Brass	175°F	16130AD	V178	\$79.63
Chrome	155°F	16130FB	V178	\$83.70
Chrome	175°F	16130FD	V178	\$83.70
White-Polyester	155°F	16130MB/W	V178	\$83.70
White-Polyester	175°F	16130MD/W	V178	\$83.70
Nickel PTFE (ENT) <sup>1</sup>	155°F	16130JNB	V188.A	\$111.44
Nickel PTFE (ENT)	175°F	16130JND	V188.A	\$111.44
Std Sprinkler Wrench		21475M/B	V207	\$103.93
Wrench for Rcsd w/Caps		13655W/B	V207	\$200.28



**Freedom™**  
**Residential**  
**Glass Bulb**  
**Pendant**

**SIN:** VK458  
**K Factor:** 7.4 (107)  
**Thread Size:** 3/4 inch NPT  
**Base Part #:** 13230

Finish	Temp	Part #	IPG	List Price
Standard Brass	155°F	13230AB	V178	\$95.27
Standard Brass	175°F	13230AD	V178	\$95.27
Chrome	155°F	13230FB	V178	\$100.42
Chrome	175°F	13230FD	V178	\$100.42
White-Polyester	155°F	13230MB/W	V178	\$100.42
White-Polyester	175°F	13230MD/W	V178	\$100.42
Nickel PTFE (ENT) <sup>1</sup>	155°F	13230JNB	V188.A	\$121.06
Nickel PTFE (ENT)	175°F	13230JND	V188.A	\$121.06
Std Sprinkler Wrench		21475M/B	V207	\$103.93
Wrench for Rcsd w/Caps		13577W/B	V207	\$200.28

\*Refer to Page H-1 for complete list of available escutcheons

(1) Electroless Nickel PTFE (ENT) plating is UL Listed and FM Approved for corrosion resistance.

NOTE: Select Freedom® sprinklers are also available in "Lead Free" versions. Refer to technical datasheets for details.

(Lead content complies with definition of 'Lead Free' established in the Reduction of Lead in Drinking Water Act, S.3874)

**Select Escutcheons - Recessed Pendant Sprinklers\***



**Recessed Escutcheon**

**Model E-1 (push-on)**

(includes cup & adapter)

(OD = 3-1/16" / 78 mm)

Finish	Size	Part #	IPG	List Price
Polished Chrome	1/2"	06419AF	V200	\$10.77
White	1/2"	06419AM/W	V200	\$10.77



**Threaded Escutcheon**

**Model E-2 (thread-on)**

(includes cup & adapter)

(OD = 3-1/8" / 80 mm)

Finish	Size	Part #	IPG	List Price
Polished Chrome	1/2"	11038F	V200	\$10.81
White	1/2"	11038M/W	V200	\$10.81

**Select Escutcheons - Recessed Pendant Sprinklers\***



**Recessed Escutcheon**

**Model E-1 (push-on)**

(includes cup & adapter)

(OD = 3-1/16" / 78 mm)

Finish	Size	Part #	IPG	List Price
Polished Chrome	3/4"	20369F	V200	\$10.81
White	3/4"	20369M/W	V200	\$10.81



**Threaded Escutcheon**

**Model E-2 (thread-on)**

(includes cup & adapter)

(OD = 3-1/8" / 80 mm)

Finish	Size	Part #	IPG	List Price
Polished Chrome	3/4"	20130F	V200	\$10.81
White	3/4"	20130M/W	V200	\$10.81



**Freedom®**  
**Residential**  
**Glass Bulb**  
**Domed Concealed Pendent**

---

**SIN:** VK468-D  
**K Factor:** 4.9 (71)  
**Thread Size:** 1/2 inch NPT  
**Base Part #:** 13637A-X

Finish	Temp	Part #	IPG	List Price
Standard Brass	155°F	13637ABX	V177	\$71.34
Standard Brass	175°F	13637ADX	V177	\$71.34
Nickel PTFE (ENT) <sup>2</sup>	155°F	13637JNBX	V188.A	\$130.67
Nickel PTFE (ENT)	175°F	13637JNDX	V188.A	\$130.67
Spk Wrench Domed Cncd		13577W/B	V207	\$200.28

**Residential Domed Cover<sup>1</sup>**  
*Freedom® Residential Domed*  
*Concealed Pendent Sprinklers*



Finish	Temp	Part #	IPG	List Price
Polished Chrome	139°F	12207FA	V214	\$109.55
White	139°F	12207MA/W	V214	\$59.28
Ivory	139°F	12207MA/I	V214	\$75.32
Black	139°F	12207MA/B	V214	\$75.32
Bright Brass	139°F	12207BA	V214	\$75.32
Brushed Brass	139°F	12207BA/B	V214	\$75.32
Antique Brass	139°F	12207BA/A	V214	\$75.32
Antique Copper	139°F	12207EA/B	V214	\$75.32

(1) Cover plates sold separately. Covers are also available in custom colors at an additional charge (see page F-8).

(2) Electroless Nickel PTFE (ENT) plating is UL Listed for corrosion resistance.

NOTE: Select Freedom® sprinklers are also available in "Lead Free" versions. Refer to technical datasheets for details.

(Lead content complies with definition of 'Lead Free' established in the Reduction of Lead in Drinking Water Act, S.3874)



**Freedom® Microtech®**  
**Residential**  
**Glass Bulb**  
**Horizontal Sidewall**

SIN: VK479  
K Factor: 3.0 (43)  
Thread Size: 1/2 inch NPT  
Base Part #: 19707

Finish	Temp	Part #	IPG	List Price
Standard Brass	155°F	19707AB	V179	\$90.78
Chrome	155°F	19707FB	V179	\$93.75
White-Polyester	155°F	19707MB/W	V179	\$93.75
Nickel PTFE (ENT) <sup>1</sup>	155°F	19707JNB	V188.A	\$124.91
Std Sprinkler Wrench		21475M/B	V207	\$103.93
Wrench Rcsd HSW		13655W/B	V207	\$200.28



**Freedom® Microtech®**  
**Residential**  
**Glass Bulb**  
**Horizontal Sidewall**

SIN: VK486  
K Factor: 4.0 (58)  
Thread Size: 1/2 inch NPT  
Base Part #: 17315

Finish	Temp	Part #	IPG	List Price
Standard Brass	155°F	17315AB	V179	\$90.20
Standard Brass	175°F	17315AD	V179	\$90.20
Chrome	155°F	17315FB	V179	\$93.75
Chrome	175°F	17315FD	V179	\$93.75
White-Polyester	155°F	17315MB/W	V179	\$93.75
White-Polyester	175°F	17315MD/W	V179	\$93.75
Nickel PTFE (ENT) <sup>1</sup>	155°F	17315JNB	V188.A	\$124.91
Nickel PTFE (ENT)	175°F	17315JND	V188.A	\$124.91
Std Sprinkler Wrench		21475M/B	V207	\$103.93
Wrench Rcsd HSW		13655W/B	V207	\$200.28



**Freedom® Microtech®**  
**Residential**  
**Glass Bulb**  
**Horizontal Sidewall**

SIN: VK460  
K Factor: 5.8 (84)  
Thread Size: 1/2 inch NPT  
Base Part #: 13933

Finish	Temp	Part #	IPG	List Price
Standard Brass	155°F	13933AB	V179	\$98.98
Standard Brass	175°F	13933AD	V179	\$98.98
Chrome	155°F	13933FB	V179	\$100.38
Chrome	175°F	13933FD	V179	\$100.38
White-Polyester	155°F	13933MB/W	V179	\$100.38
White-Polyester	175°F	13933MD/W	V179	\$100.38
Nickel PTFE (ENT) <sup>1</sup>	155°F	13933JNB	V188.A	\$134.51
Nickel PTFE (ENT)	175°F	13933JND	V188.A	\$134.51
Std Sprinkler Wrench		21475M/B	V207	\$103.93
Wrench Rcsd HSW		13655W/B	V207	\$200.28



**Freedom®**  
**Residential**  
**Glass Bulb**  
**Horizontal Sidewall**

SIN: VK484  
K Factor: 4.2 (60)  
Thread Size: 1/2 inch NPT  
Base Part #: 16240

Finish	Temp	Part #	IPG	List Price
Standard Brass	155°F	16240AB	V180	\$71.73
Standard Brass	175°F	16240AD	V180	\$71.73
Chrome	155°F	16240FB	V180	\$77.87
Chrome	175°F	16240FD	V180	\$77.87
White-Polyester	155°F	16240MB/W	V180	\$77.87
White-Polyester	175°F	16240MD/W	V180	\$77.87
Nickel PTFE (ENT) <sup>1</sup>	155°F	16240JNB	V188.A	\$115.30
Nickel PTFE (ENT)	175°F	16240JND	V188.A	\$115.30
Std Sprinkler Wrench		21475M/B	V207	\$103.93
Wrench Rcsd HSW		13655W/B	V207	\$200.28

Select Escutcheons - Recessed Pendent Sprinklers\*



**Recessed Escutcheon**  
**Model E-1 (push-on)**  
*(includes cup & adapter)*  
*(OD = 3-1/16" / 78 mm)*

Finish	Size	Part #	IPG	List Price
Polished Chrome	1/2"	06419AF	V200	\$10.77
White	1/2"	06419AM/W	V200	\$10.77

\*Refer to Page H-1 for complete list of available escutcheons

Select Escutcheons - Recessed Pendent Sprinklers\*




**Threaded Escutcheon**  
**Model E-2 (thread-on)**  
*(includes cup & adapter)*  
*(OD = 3-1/8" / 80 mm)*

Finish	Size	Part #	IPG	List Price
Polished Chrome	1/2"	11038F	V200	\$10.81
White	1/2"	11038M/W	V200	\$10.81

\*Refer to Page H-1 for complete list of available escutcheons

1) Electroless Nickel PTFE (ENT) plating is UL Listed and FM Approved for corrosion resistance.


NOTE: Select Freedom® sprinklers are also available in "Lead Free" versions. Refer to technical datasheets for details.  
(Lead content complies with definition of 'Lead Free' established in the Reduction of Lead in Drinking Water Act, S.3874)



**Freedom®**  
**Residential**  
**Fusible Link Flat Concealed**  
**Horizontal Sidewall**

---

**SIN:** VK480<sup>1</sup>  
**K Factor:** 4.0 (58)  
**Thread Size:** 1/2 inch NPT  
**Base Part #:** 16116\_



**Freedom®**  
**Residential**  
**Fusible Link Flat Concealed**  
**Horizontal Sidewall**

---

**SIN:** VK490<sup>1</sup>  
**K Factor:** 5.8 (84)  
**Thread Size:** 1/2 inch NPT  
**Base Part #:** 20409A\_

Finish	Temp	Part #	IPG	List Price
Standard Brass	165°F	16116AC	V181	\$134.23
Nickel PTFE (ENT) <sup>3</sup>	165°F	16116JNC	V188.A	\$220.97
Standard Brass	205°F	16116AE	V181	\$134.23
Nickel PTFE (ENT) <sup>3</sup>	205°F	16116JNE	V188.A	\$220.97
Heavy Duty Wrench RED		16208W/R	V207	\$200.28
Limited Use Wrench* RED		16267	V207	\$41.05

Finish	Temp	Part #	IPG	List Price
Standard Brass	165°F	20409AC	V181	\$134.23
Standard Brass	205°F	20409AE	V181	\$134.23
Heavy Duty Wrench RED		16208W/R	V207	\$200.28
Limited Use Wrench* RED		16267	V207	\$41.05

**Model VK480**  
**Flat Cover Plate<sup>2</sup>**



Diameter = 3-5/16 inches

Finish	Temp	Part #	IPG	List Price
Chrome	139°F	16207FA	V213	\$95.57
White	139°F	16207MA/W	V213	\$55.27
Ivory	139°F	16207MA/I	V213	\$66.43
Black	139°F	16207MA/B	V213	\$66.43
Cover Installation Tool		14867	V205	\$17.84

**Model VK490**  
**Flat Cover Plate<sup>2</sup>**



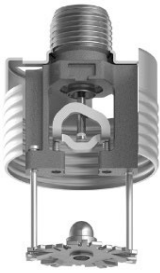
Diameter = 3-5/16 inches

Finish	Temp	Part #	IPG	List Price
Chrome	139°F	16207FA	V213	\$95.57
Chrome	165°F	16207FC	V213	\$95.57
White	139°F	16207MA/W	V213	\$55.27
White	165°F	16207MC/W	V213	\$55.27
Ivory	139°F	16207MA/I	V213	\$66.43
Ivory	165°F	16207MC/I	V213	\$95.57
Black	139°F	16207MA/B	V213	\$66.43
Black	165°F	16207MC/B	V213	\$95.57
Cover Installation Tool		14867	V205	\$17.84

- (1) Special installation pipe guide and hardware (p/n 16234) is included standard with sprinkler at no additional charge.
- (2) Cover plate is sold separately. Covers are also available in custom colors. Contact customer service for details.
- (3) Electroless Nickel PTFE (ENT) plating is UL Listed and FM Approved for corrosion resistance.

NOTE: Select Freedom® sprinklers are also available in "Lead Free" versions. Refer to technical datasheets for details.  
(Lead content complies with definition of 'Lead Free' established in the Reduction of Lead in Drinking Water Act, S.3874)

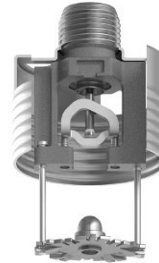




**Freedom®**  
**Residential**  
**Glass Bulb**  
**Concealed Pendent**

**SIN:** VK494  
**K Factor:** 4.9 (71)  
**Thread Size:** 1/2 inch NPT  
**Base Part #:** 23707

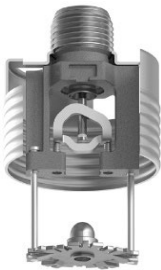
Finish	Temp	Part #	IPG	List Price
Standard Brass	155°F	23707AB	V182	\$79.98
Standard Brass	200°F	23707AE	V182	\$79.98
Nickel PTFE (ENT) <sup>2</sup>	155°F	23707JNB	V188.A	\$130.67
Nickel PTFE (ENT)	200°F	23707JNE	V188.A	\$130.67
Installation Wrench (red)		23143	V207	\$62.65



**Freedom®**  
**Residential**  
**Glass Bulb**  
**Flat Concealed Pendent**

**SIN:** VK498  
**K Factor:** 5.8 (84)  
**Thread Size:** 1/2 inch NPT  
**Base Part #:** 23764

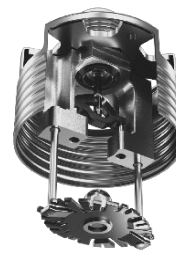
Finish	Temp	Part #	IPG	List Price
Standard Brass	155°F	23764AB	V183	\$82.25
Standard Brass	200°F	23764AE	V183	\$82.25
Nickel PTFE (ENT) <sup>2</sup>	155°F	23764JNB	V188.A	\$130.64
Nickel PTFE (ENT)	200°F	23764JNE	V188.A	\$130.64
Installation Wrench (red)		23143	V207	\$62.65



**Freedom®**  
**Residential**  
**Glass Bulb**  
**Concealed Pendent**

**SIN:** VK496  
**K Factor:** 3.0 (43)  
**Thread Size:** 1/2 inch NPT  
**Base Part #:** 23763

Finish	Temp	Part #	IPG	List Price
Standard Brass	155°F	23763AB	V183.1	\$85.80
Standard Brass	200°F	23763AE	V183.1	\$85.80
Nickel PTFE (ENT) <sup>2</sup>	155°F	23763JNB	V188.A	\$205.34
Nickel PTFE (ENT)	200°F	23763JNE	V188.A	\$205.34
Installation Wrench (red)		23143	V207	\$62.65



**Freedom®**  
**Residential**  
**Glass Bulb**  
**Concealed Pendent**

**SIN:** VK495  
**K Factor:** 3.7 (53)  
**Thread Size:** 1/2 inch NPT  
**Base Part #:** 25639

Finish	Temp	Part #	IPG	List Price
Standard Brass	155°F	25639AB	V183.1	\$85.80
Standard Brass	200°F	25639AE	V183.1	\$85.80
Nickel PTFE (ENT) <sup>2</sup>	155°F	25639JNB	V188.A	\$130.64
Nickel PTFE (ENT)	200°F	25639JNE	V188.A	\$130.64
Installation Wrench (red)		23143	V207	\$62.65

**Large Cover Plate<sup>1</sup>**  
Diameter = 3-5/16 inches

\*Thread-On Style



Finish	Temp	Part #	IPG	List Price
Polished Chrome	139°F	23174FA	V208	\$126.88
White	139°F	23174MA/W	V208	\$47.67
Ivory	139°F	23174MA/I	V209	\$60.57
Black	139°F	23174MA/B	V209	\$60.57
Bright Brass	139°F	23174BA	V209	\$60.57
Brushed Brass	139°F	23174BA/B	V209	\$60.57
Antique Brass	139°F	23174BA/A	V209	\$60.57
Brushed Copper	139°F	23174EA/B	V209	\$60.57
Brushed Chrome	139°F	23174FA/B	V209	\$60.57

**Standard Cover Plate<sup>1</sup>**  
Diameter = 2-3/4 inches

\*Thread-On Style



Finish	Temp	Part #	IPG	List Price
Polished Chrome	139°F	23190FA	V208	\$126.88
White	139°F	23190MA/W	V208	\$47.67
Ivory	139°F	23190MA/I	V209	\$60.57
Black	139°F	23190MA/B	V209	\$60.57
Bright Brass	139°F	23190BA	V209	\$60.57
Brushed Brass	139°F	23190BA/B	V209	\$60.57
Antique Brass	139°F	23190BA/A	V209	\$60.57
Brushed Copper	139°F	23190EA/B	V209	\$60.57
Brushed Chrome	139°F	23190FA/B	V209	\$60.57

\* Refer to Section H for full list of cover plate options.

- (1) Cover plates sold separately. Covers are also available in custom colors at an additional charge (see page F-8).
- (2) Electroless Nickel PTFE (ENT) coating is UL Listed for corrosion resistance.

NOTE: Select Freedom® sprinklers are also available in "Lead Free" versions. Refer to technical datasheets for details.  
(Lead content complies with definition of 'Lead Free' established in the Reduction of Lead in Drinking Water Act, S.3874)



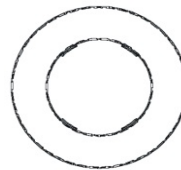
**Freedom®**  
**Residential**  
**Glass Bulb**  
**Upright**

<b>SIN:</b>	VK467
<b>K Factor:</b>	4.9 (71)
<b>Thread Size:</b>	1/2 inch NPT
<b>Base Part #:</b>	19154

Finish	Temp	Part #	IPG	List Price
Standard Brass	155°F	19154AB	V184	\$101.34
Standard Brass	175°F	19154AD	V184	\$101.34
Chrome	155°F	19154FB	V184	\$104.45
Chrome	175°F	19154FD	V184	\$104.45
White - Polyester	155°F	19154MB/W	V184	\$104.45
White - Polyester	175°F	19154MD/W	V184	\$104.45
Black - Polyester	155°F	19154MB/B	V184	\$104.45
Black - Polyester	175°F	19154MD/B	V184	\$104.45
Nickel PTFE (ENT) <sup>1</sup>	155°F	19154JNB	V188.A	\$110.30
Nickel PTFE (ENT)	175°F	19154JND	V188.A	\$110.30
Std Sprinkler Wrench		21475M/B	V207	\$103.93

(1) Electroless Nickel PTFE (ENT) plating is UL Listed for installation in corrosive environments

**Ceiling Ring**  
**Item Price Group = V17**



Finish	Part #	IPG	List Price
Polished Chrome	09390F	V185	\$11.56
Painted White	09390M/W	V185	\$12.15

NOTE: Select Freedom® sprinklers are also available in "Lead Free" versions. Refer to technical datasheets for details.  
(Lead content complies with definition of 'Lead Free' established in the Reduction of Lead in Drinking Water Act, S.3874)



**Viking Custom Paint Process (UL Listed)**  
**Cover Plates, Escutcheons, and Frame-Style Sprinklers**

**Description:** Viking cover plates, escutcheons, and most frame-style sprinklers are UL listed to accept any type and manufacturer of paint within the constraints of Viking's quality control requirements. Acrylic latex and latex paints with sheen qualities other than flat may not be exact matches.

**Terms and Conditions of Sale:** Orders for special painted products are not subject to cancellation except by written permission and then only upon agreement to make payment for work already performed. Viking reserves the right to over ship special painted products produced in excess of order quantity at no charge. No return of these products is allowed. Changes to products may result in the loss of listings or approvals.

**To Order:** Contact your Viking SupplyNet Customer Service Representative.

**Identification of Custom Paint Color:** All custom color painted cover plates or escutcheons will have an identifying label affixed to the inside of the cover that indicates custom color and will have a representative sample (a paint dot) of the paint on the label.

**Pricing Matrix**

<b>Set-up Cost</b> <i>(all special painted products)</i>	<b>\$267.50</b>	Set-up fee if customer sends paint to be applied to custom painted product.			
	<b>\$401.25</b>	Set-up fee for all special painted products using Sherwin-Williams (or similar commercial paint) color chart/fan.			
	<b>\$444.05</b>	Set-up fee for "Industrial Color Match" with Sherwin Williams paint.			
<b>List Price</b>	<b>Frame-Style Sprinklers and Escutcheons</b>	Special painted frame-style sprinklers and/or escutcheons have the same list price as BLACK for the specific product requested. <b>Processing time 15 working days from customer order.</b>			
<b>List Price</b>	<b>Special Painted Cover Plates</b>	<i>Part Number</i>	<i>Description</i>	<i>IPG</i>	<i>List Price</i>
		23447SP,23190SP	Standard Flat Cover Plate	V215	\$86.17
		23463SP,23174SP	Large Flat Cover Plate	V215	\$86.17
		23482SP,23179SP	Square Flat Cover Plate	V215	\$79.43
		15765SP-	ELO Flat Cover Plate	V215	\$63.91
		12381SP-	Domed Cover Plate-Pendent	V215	\$63.91
		13501SP-	Sidewall Domed Cover Plate	V215	\$63.91
		09804SP-	Model B Standard Cover <small>(old)</small>	V215	\$63.91
		11697SP-	Model B Large Cover <small>(old)</small>	V215	\$63.91
		12207SP-	Domed Cover-Residential	V215	\$63.91
		16207SP-	Sidewall Flat Cover Plate	V215	\$90.54
10786SP-	Model B Res Cover Plate <small>(old)</small>	V215	\$63.91		
<b>Processing time</b>	<b>Cover Plates</b>	Sherwin-Williams Part Number or Color Match - 10 working days from customer order			
		Commercial paint number other than Sherwin-Williams - 15 working days from customer order			
		Customer provided paint - 20 days from receipt of paint			
<b>Number of Covers</b>	<b>Per Set-up Cost</b>	Sherwin-Williams paint number or color match - (800) cover plates			
		Commercial paint number other than Sherwin-Williams - (750) cover plates			
		Customer provided paint - 1 gallon container = 500 covers, 1 quart container = 125 covers.			

**Residential Dry**  
**4.0 (57.7) K Factor**  
**Horizontal Sidewall / 1" NPT**  
**Glass Bulb**

**VK449**  
**Recessed Adjustable**  
**Base P/N: 24961**



To order, add finish, temperature  
and length suffix to base part number  
(length = A dimension, inches)

Ex: VK449, White, 155 °F, 12" length

Part Number: 24961MB/W12

order in ¼" increments

Item Price Group: V187 (ENT Finish: IPG V188)

VK449	Length (L) - A Dimension	LIST PRICES and Available Finishes		
		Polished Chrome (F_)	White (M_/W)	ENT (JN)
base p/n - 24961(f)(t)(l)	3¾ - 6" (95 - 152mm)	\$373.06	\$373.06	\$496.91
	6¼ - 9" (159 - 229mm)	\$386.35	\$386.35	\$496.91
	9¼ - 12" (235 - 305mm)	\$395.23	\$395.23	\$519.13
	12¼ - 15" (311 - 381mm)	\$430.77	\$430.77	\$554.63
	15¼ - 18" (387 - 457mm)	\$457.35	\$457.35	\$581.25
	18¼ - 21" (464- 533mm)	\$475.10	\$475.10	\$599.08
	21¼ - 24" (540 - 610mm)	\$523.99	\$523.99	\$647.92

**Additional Ordering**  
**Information**  
VK449

**Available Temp.**  
**Ratings / Suffix**  
155°F (68°C) = B  
200°F (93°C) = E

**Installation Wrench**  
**Heavy Duty**  
24689M/B \$200.28

**Dry Spk Replacement**  
**Escutcheons**  
**Rec. Adj. - Chrome**  
05459AF \$7.58  
**Rec. Adj. - White**  
05459AM/W \$7.58  
**Rec. Adj. - Black**  
05459AM/B \$8.83  
**Rec. Adj. - ENT**  
07529JN \$64.38

**Dry Sprinkler Boot**  
22087M/W \$64.44