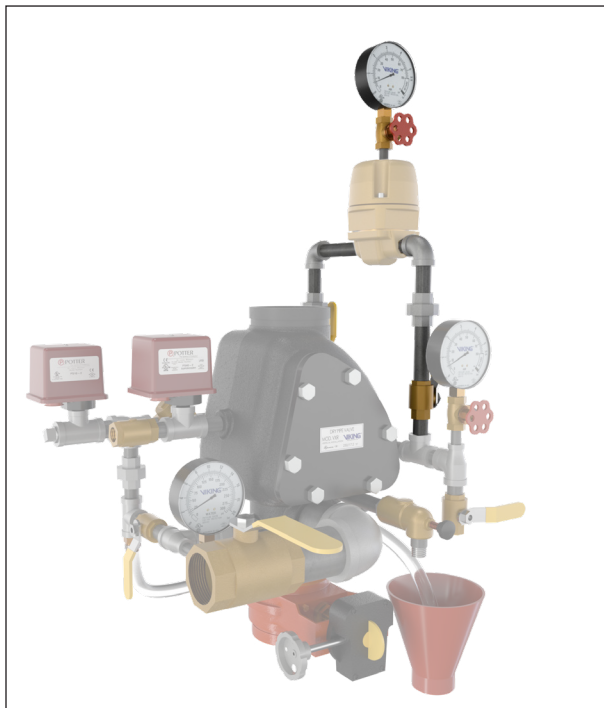




TECHNICAL DATA

MODEL D-2 ACCELERATOR TRIM WITH MODEL VXR DRY VALVES

The Viking Corporation, 210 N Industrial Park Drive, Hastings MI 49058
 Telephone: 269-945-9501 Technical Services: 877-384-5464 Fax: 269-818-1680 Email: techsvcs@vikingcorp.com
 Visit the Viking website for the latest edition of this technical data page. www.vikinggroupinc.com



Accelerator Trim

VXR Valve Size	Trim Part Number
2½", 3", 4" & 6"	24112-1
Standard Trim Sets include galvanized nipples and fittings.	



WARNING: Cancer and Reproductive Harm-
www.P65Warnings.ca.gov

NOTE: Viking uses ASME fitting designations. Tee's shall be called out in the following manner: 1-Largest outlet on run; 2-Smaller outlet on run; 3-Branch size.



General Notes:

- Accelerator must be trimmed as shown. Any deviation from trim size or arrangement may affect operation of the Accelerator.
- Dimensions in parenthesis are millimeter and may be approximations.
- The Model D-2 Accelerator is NOT included with trim packages and must be ordered separately (P/N 09881). Accelerators must be trimmed as shown. For instructions pertaining to PLACING THE SYSTEM IN SERVICE, refer to Technical Data for the Model D-2 Accelerator.
- Accelerator Isolation Valves are NORMALLY OPEN. Do not close either Isolation Valve, except during system hydrostatic test and when servicing the Accelerator.

Accelerator Operation:

(Refer to Accelerator Technical Data)

1st: System air pressure is reduced.

2nd: Accelerator operates, exhausting air pressure from inlet piping and routing the system air into the intermediate chamber of the Dry Valve.

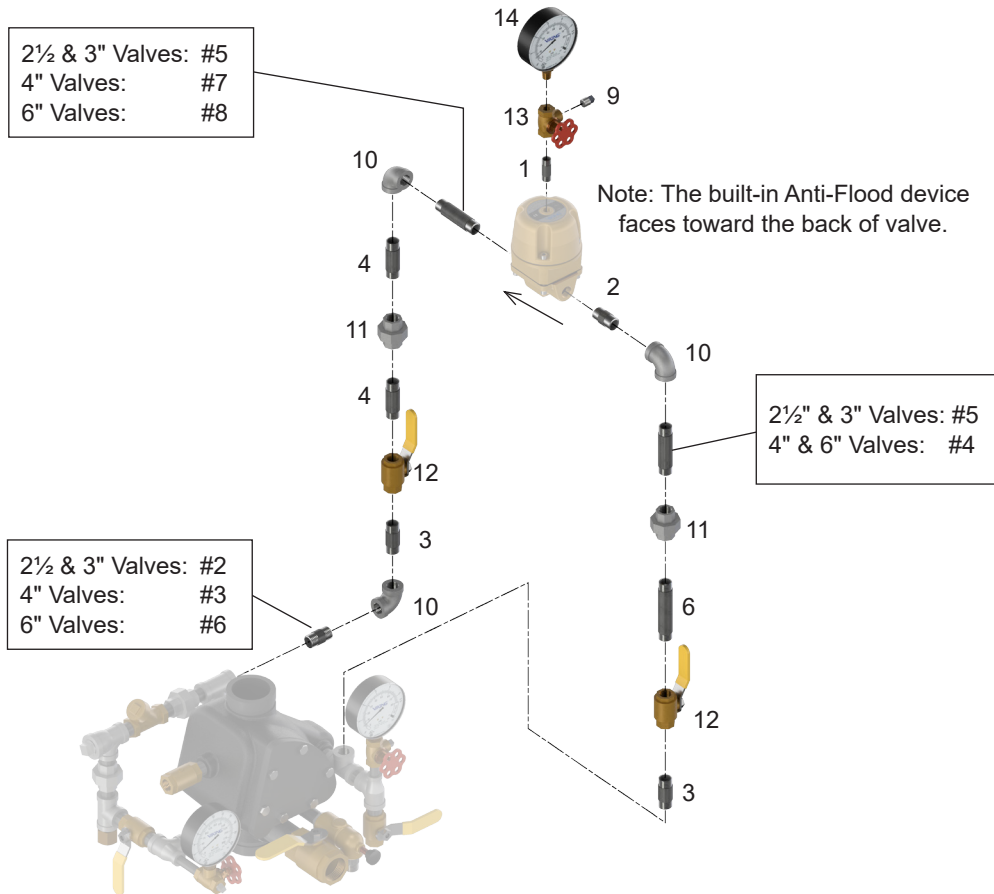
CAUTION: When resetting air to accelerator, all air in top chamber of accelerator must be bled to zero so it will seat when adding air. The air can be bled by loosening the air gauge on top of the accelerator.



TECHNICAL DATA

MODEL D-2 ACCELERATOR TRIM WITH MODEL VXR DRY VALVES

The Viking Corporation, 210 N Industrial Park Drive, Hastings MI 49058
 Telephone: 269-945-9501 Technical Services: 877-384-5464 Fax: 269-818-1680 Email: techsvcs@vikingcorp.com
 Visit the Viking website for the latest edition of this technical data page. www.vikinggroupinc.com



Model D-2 Accelerator Trim Diagram for use with Model VXR Valves (2 1/2" Shown)

#	Description/Specification	Metric Length	Quantity
1	1/4" X 1-1/2"	38 mm	1
2	1/2" X 1-1/2"	38 mm	1
3	1/2" X 2"	51 mm	2
4	1/2" X 2-1/2"	64 mm	2
5	1/2" X 3"	76 mm	-
6	1/2" X 4"	102 mm	1
7	1/2" X 4-1/2"	114 mm	-
8	1/2" X 5-1/2"	140 mm	-
9	1/4" plug	--	1
10	1/2" elbow	--	3
11	1/2" union	--	2
12	1/2" Ball Valve (normally open)	--	2
13	1/4" Side outlet valve	--	1
14	Air pressure gauge	--	1

* Not all items listed are used on each size trim. See notes on image.